

New Polo Vivo



Volkswagen

New Polo Vivo Hatch Specification.

X = standard O = optional - = not available

New Polo Vivo Hatch Specification	55kW Trendline	63kW Comfortline	77kW Comfortline Tiptronic®	77kW Maxx Highline	81kW TSI GT
Engine					
Cylinders	4	4	4	4	3
Capacity (cm³)	1398	1398	1598	1598	999
Bore/Stroke (mm)	76.5/75.6	76.5/75.6	76.5/86.9	76.5/86.9	74.5/76.4
Fuel Injection	X	X	X	X	X
CO ₂ Emissions (g/km)	134	140	144	148	109
Transmission					
5-speed manual	X	X	-	X	-
6-speed manual	-	-	-	-	X
6-speed manual Tiptronic®	-	-	X	-	-
Performance					
Power output (kW @ r/min)	55 @ 4800	63 @ 5000	77 @ 5250	77 @ 5250	81 @ 5000
Torque (Nm @ r/min)	130 @ 3750	132 @ 3750	153 @ 3800	153 @ 3800	200 @ 2000
Top speed (km/h)	171	177	188	188	196
Fuel consumption (litres / 100 km)*					
Extra-urban	4,5	4,8	4,9	4,8	4
Urban cycle	7,6	7,9	8,2	8,5	5,5
Combined	5,7	5,9	6,1	6,2	4,6
Running Gear					
Front axle:					
Lowered suspension	-	-	-	-	X
Raised suspension (15mm)	-	-	X	-	-
Suspension struts, wishbone	X	X	X	X	X
Rear axle:					
Suspension struts, toe correcting, torsion beam, trailing arm axle	X	X	X	X	X
Brakes					
Brake fluid warning indicator	X	X	X	X	X
Brake pressure regulator	X	X	X	X	X
Front discs	X	X	X	X	X
Rear drum brakes	X	X	X	X	X
ABS with EBD	X	X	X	X	X
Wheelrims / tyres					
Full wheel trim covers	X	X	X	-	-
Steel spare wheel for temporary use	-	-	-	X	X
Full-size steel spare wheel	X	X	X	-	-
Wheel cover 5J X 14 steel 175/70 R 14	X	X	X	-	-
"Estrada" 6J X 15 alloy 185/60 R 15	O	O	O	-	-
"Rivazza" 7J X 16 alloy 205/45 R 16	-	-	-	X	-
"Canyon" 7.5J X 17 alloy wheels 215/40 R17	-	-	-	-	-
"Mirabeau" 7J X 17 alloy wheels 215/40 R17	-	-	-	-	X
Dimensions / Capacities					
Fuel tank 45l	X	X	X	X	X
Luggage compartment 280l	X	X	X	X	X
Seats folded 952l	X	X	X	X	X

New Polo Vivo Hatch Specification	55kW Trendline	63kW Comfortline	77kW Comfortline Tiptronic®	77kW Maxx Highline	81kW TSI GT
Audio & Communication					
Radio 140G SD/USB/Bluetooth with B-sting/4 Speakers	X	X	X	-	-
Radio 340G SD/USB/Bluetooth/App-Connect with B-sting/4 Speakers	-	O	O	-	-
Radio 340G SD/USB/Bluetooth/App-Connect with B-sting/6 Speakers	-	-	-	X	X
Safety					
Driver and passenger airbags	X	X	X	X	X
ISOFIX child seat mounting points	X	X	X	X	X
Childproof locks on rear doors	X	X	X	X	X
High level brake light	X	X	X	X	X
Front fog lights	O	X	X	X	X
Electronic Stability Control	O	O	X	X	X
Tyre Pressure Monitor	O	O	X	X	X
Security					
Immobiliser	X	X	X	X	X
Alarm with Remote Central locking	X	X	X	X	X
Ultrasonic alarm sensors	X	X	X	X	X
Mirrors					
Aspherical driver's side	X	X	X	X	X
Black exterior mirrors	X	-	-	-	-
Body-coloured exterior mirrors	-	X	X	X	X
Dulled aluminium exterior mirrors	-	-	-	-	-
Manual and remotely adjustable mirrors from inside	X	X	X	X	X
Windows					
Tinted glass all round	X	X	X	X	X
Heated rear window	X	X	X	X	X
Front electric windows	X	X	X	X	X
Interior Features					
Heating and fresh air ventilation system	X	X	X	X	X
Cup holders, 2 integrated into centre console	X	X	X	X	X
Digital clock	X	X	X	X	X
Digital trip recorder	X	X	X	X	X
Passenger vanity mirror	X	X	X	X	X
Electronic rev counter	X	X	X	X	X
Front door pockets	X	X	X	X	X
Height-adjustable steering column	X	X	X	X	X
Reach-adjustable steering column	X	X	X	X	X
3-spoke steering wheel	X	X	X	-	-
Multi-function Steering Wheel	-	X	X	-	-
3-spoke multi-function leather steering wheel with aluminium inserts	O	O	O	X	X
Painted upper centre console - Anthracite	X	X	X	X	-
Painted upper centre console - Colour	-	-	-	-	X
Anthracite sunvisors	-	-	-	-	X
Anthracite headlining/cover and A,B,C post uppers	-	-	-	-	X
Leatherette gearshift boot	X	X	X	X	X
High tone hooter	X	X	X	X	X
Lights on warning buzzer	X	X	X	X	X
Manual anti-dazzle rear-view mirror	X	X	X	X	X
Power steering	X	X	X	X	X
Manually controlled airconditioner	X	X	X	X	X
Multi-function Display	-	X	X	X	X
Cruise control	O	O	O	O	X
Sport pedal cluster	-	-	-	-	X
Loose lay carpet mats	O	O	O	O	X
Smokers Package	O	O	O	O	O

New Polo Vivo Hatch Specification	55kW Trendline	63kW Comfortline	77kW Comfortline Tiptronic®	77kW Maxx Highline	81kW TSI GT
Seats					
Height-adjustable front head restraints	X	X	X	X	X
Rear head restraints	X	X	X	X	X
Rear seat bench backrest - fixed folding	X	X	X	X	X
Pocket on backrest	O	O	O	X	X
Height-adjustable driver seat	-	X	X	X	X
"Tradition" cloth seat trim	X	-	-	-	-
"City" cloth seat trim	-	X	X	-	-
"Cable" cloth seat trim	-	-	-	X	-
"Blade" cloth seat trim	-	-	-	-	-
"Space" cloth seat trim	-	-	-	-	X
Front Sports Seats	-	-	-	-	X
"Vienna" Leather seat package (Package includes leather-covered seat material, leather mufu steering wheel, gearshift lever and gearknob)	-	O	O	O	O
Exterior Features					
Body-coloured bumpers	X	X	X	X	X
Black door handles	X	-	-	-	-
Body-coloured door handles	-	X	X	X	X
Rear tailgate spoiler	-	-	-	-	X
Underbody Guard	-	-	X	-	-
GT lettering on the tailgate, front grille and sides	-	-	-	-	X
Maxx lettering on the tailgate and sides	-	-	-	-	-
Black side moulding	-	-	-	-	X
Tailgate spoiler	-	-	-	-	X
Sporty single-pipe exhaust system with chrome trim	-	-	-	-	X
Dulled aluminium roof rails	-	-	-	-	-
Guarantees					
Warranty 3-year / 120 000km	X	X	X	X	X
Anti-corrosion Warranty (6-year)	X	X	X	X	X
15 000 km service intervals	X	X	X	X	X
Volkswagen AutoMotion Maintenance Plan	O	O	O	O	O
Volkswagen AutoMotion Service Plan	O	O	O	O	O
<p>Disclaimer Dimensions, capacities and abilities apply to standard vehicles. Actual consumption will vary with vehicle loading, driving style, climatic and road conditions.</p> <p>Fuel Consumption and Carbon Dioxide Emission Figures. The figures reflected were obtained in accordance with prescribed uniform measuring standards (SANS 20101: 2006/ECE R101: 2005 in their currently applicable versions) under laboratory type conditions. The measuring standards are stipulated by law. They do not apply to a specific vehicle and are provided to enable comparison between different vehicle models tested using the same uniform measuring standard. The values are accordingly not necessarily representative of real-life driving conditions. Factors such as driving style, vehicle load, road conditions, tyre size, traffic and ambient conditions may result in different fuel consumption and carbon dioxide emission levels to those achieved under the test parameters referred to above. More details are contained in the owner's manual.</p> <p>The above information is effective as at September 2018 and is subject to change.</p>					

Prices & Options - New Polo Vivo Hatch.

Prices are inclusive of CO₂ tax and 15% VAT

X = standard O = optional - = not available

Recommended Retail Prices	55kW Trendline	63kW Comfortline	77kW Comfortline Tiptronic®	77kW Maxx Highline	81kW TSI GT
Retail Price	R185,900	R196,800	R227,400	R221,200	R253,200
Metallic / Pearlescent Paint	R950	R950	R950	R950	R950
Cruise Control	R1,850	R1,850	R1,850	R1,850	X
Smokers Package	R250	R250	R250	R250	R250
Floor Mats Front and Rear	R400	R400	R400	R400	X
Storage Package (Front Centre Armrest + Drawer under Drivers Seat)	-	R2,050	R2,050	R2,050	R2,050
Safety Package (ESC + Tyre Pressure Monitor)	R2,550	R2,550	X	X	X
Radio 340G SD/USB/MP3/Bluetooth/App Connect with B-sting/4 Speakers	-	R2,850	R2,850	-	-
"Vienna" leather trim package (Package includes leather-covered seat material, multi-function steering wheel, gearshift lever, gearshift knob and front sport seats)	-	R9,350	R9,350	R9,350	R9,350
"Estrada" 15" alloy wheels	R4,550	R4,550	R4,550	-	-
Front fog lights	R1,450	X	X	X	X
Removable Towbar	-	R3,850	R3,850	R3,850	R3,850

Volkswagen Optional & Extended AutoMotion Maintenance Plans	55kW Trendline	63kW Comfortline	77kW Comfortline Tiptronic®	77kW Maxx Highline	81kW TSI GT
Optional Maintenance Plan (3-year / 45 000km)	R7,245				
Optional Maintenance Plan (5-year / 60 000km)	R9,660				
Optional Maintenance Plan (5-year / 80 000km)	R17,020				
Maintenance Plan Extension (6-year) Pre-requisite is an Optional 5-year combo Maintenance Plan	R9,854				
Optional Maintenance Plan (6-year / 60 000km)	R15, 572				

Subject to an Active Standard Volkswagen warranty or an Active Genuine Volkswagen Maintenance Plan

Volkswagen Optional & Extended AutoMotion Service Plans	55kW Trendline	63kW Comfortline	77kW Comfortline Tiptronic®	77kW Maxx Highline	81kW TSI GT
Optional Service Plan (3-year / 45 000km)	R4,821				
Optional Service Plan (5-year / 60 000km)	R8,282				
Optional Service Plan (5-year / 75 000km)	R9,294				
Service Plan Extension (6-year) Pre-requisite is an Optional 5-year combo Service Plan	R1,012				

Share the ride.

The new Polo Vivo is here and it's equipped with a variety of features to suit you and your crew. From the front electric windows, ISOFIX mounting points for baby seats, Ultrasonic alarm, to its stylish exterior and sound system, the new Polo Vivo has it all. With features as attractive as this, everyone will want to share the ride.



Style comes standard.

The new Polo Vivo looks as smooth as it drives. With its smart design and handy features, it's no wonder it grabs attention.

Features you can expect across the new Polo Vivo range:

- Front electric windows
- ISOFIX mounting points for baby seats
- Ultrasonic alarm system

For more information on standard features and optional extras on selected models, visit www.vw.co.za



It's what's on the inside that counts.

As the adage goes, it's what's on the inside that counts – the same is true for Polo Vivo. It raises the bar for vehicles in its category.

Standard features you can expect in the new Polo Vivo include:

- Electronic rev counter
- Digital clock
- Digital trip recorder
- Passenger vanity mirror
- Front door pockets
- Height- and reach-adjustable steering column
- Manual anti-dazzle rear view mirror
- Power steering
- Airconditioning

For more information on optional extras on selected models, visit www.vw.co.za



Note that this is a Highline with optional features.

Innovation has never looked this good.

The new Polo Vivo is equipped with more digital features than any other small car in its category. The 340G radio with SD, USB, Bluetooth, App-Connect with B-sting/2 speakers and 2 tweeters are optional on the Comfortline. All these features, as well as 4 speakers and 2 tweeters, come standard on the Highline, GT and Maxx.

App-Connect allows you to access your iPhone/CarPlay screen, selected apps, maps and music by syncing with the infotainment system.

For more information on standard features and optional extras on selected models, visit www.vw.co.za



Note that this is a Highline with optional features.

Feel safe and sound in the new Polo Vivo.

When you get behind the wheel of a Polo Vivo, you can trust that you and your passengers are well protected. From airbags to ISOFIX mounting points for baby seats, young and old will be safeguarded. Knowing that your car comes with these features, is just one more reason to own a Polo Vivo.

Features you can expect in the new Polo Vivo:

- Driver & passenger airbags
- ISOFIX baby seat mounting points
- Childproof locks on rear doors
- High-level brake light
- Front fog lights (Optional on Trendline)
- Electronic Stability Control (Optional on the Trendline and manual Comfortline)
- Tyre Pressure Monitor (Optional on the Trendline and manual Comfortline)



More power to you.

If you're looking for punch and potency in a car, we have something for you. The Trendline comes with a power output of 55kW and the Comfortline (manual) with 63kW, Comfortline Tiptronic, Highline and Maxx all come with 77kW and GT comes with 81kW. While all five trim lines share a bunch of attractive features, they also come with their own optional and standard key features. At the end of the day, how you like your Polo Vivo is entirely up to you.



Raising the bar on tar.

When you get behind the wheel of the new Polo Vivo GT, you'll agree that it's in a class of its own and as stylish as it is sporty. It comes with attractive exterior features such as 17" 'Mirabeau' wheels and a single pipe exhaust with chrome trim. Interior attributes include a 1.0 TSI 81kW engine, front Sport seats, aluminium-look pedals and 'Anthracite' headlining.

More features you can expect in the GT:

- Cruise Control
- Lowered suspension (-15mm)
- GT logo on sides of vehicle and grille
- 'Anthracite' sunvisors
- 'Space' seat trim
- Tailgate spoiler in black



It's better in leather.

The Polo Vivo just got smoother than smooth with the option of a leather-trimmed interior. When you're looking to impress, you'll do just that when you rock up in your extra-sleek new ride.



Colour options



Flash Red



Reef Blue Metallic



Deep Black Pearl



Pure White



Reflex Silver Metallic



Limestone Grey Metallic

Maxx colour options



Wheel options



14" steel wheels
(Standard on Trendline/Comfortline)



15" 'Estrada' alloys
(Optional on Trendline/Comfortline)



16" 'Rivazza' alloys
(Standard on Highline)

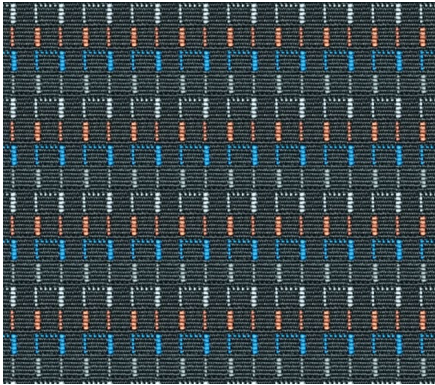


17" 'Mirabeau' alloys
(Standard on GT)



17" 'Canyon' alloys
(Standard on Maxx)

Seat trim options



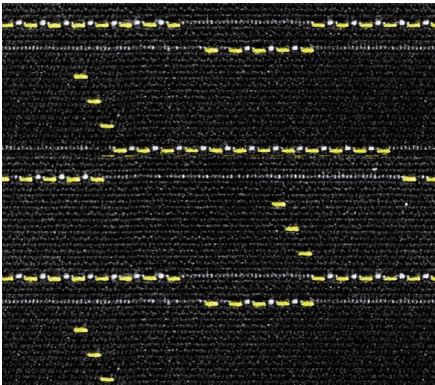
'Tradition' cloth seat trim
(Standard on Trendline)



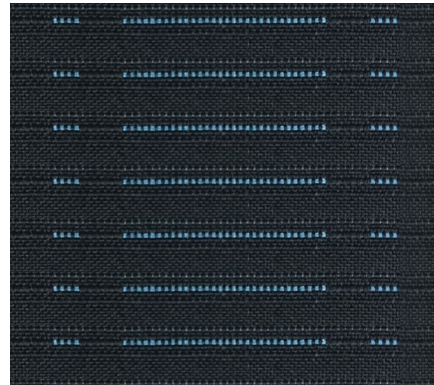
'City' cloth seat trim
(Standard on Comfortline)



'Cable' cloth seat trim
(Standard on Highline)



'Maxx' seat trim
(Standard on Maxx)



'Space' cloth seat trim
(Standard on GT)



'Vienna' leather* seat trim
(Optional across the range)

*A combination of leather and high-quality durable materials.



This information was effective as of September 2018 and is subject to change without notice.

**Visit us at www.vw.co.za
©Volkswagen South Africa**