

# Caddy Panel Van



Commercial  
Vehicles



# Caddy Panel Van Specifications.

X = standard O = optional - = not available

Caddy Panel Van Specification	Caddy Panel Van 1.6i 81kW SWB	Caddy Panel Van 2.0 TDI 81kW SWB
<b>Engine</b>		
Cylinders	4	4
Capacity (cm <sup>3</sup> )	1598	1968
Output (kW @ r/min)	81 @ 5800	81 @ 4200
Torque (Nm @ r/min)	155 @ 3800-4000	250 @ 1500-2500
CO2 emissions (g/km)**	164	147
<b>Transmission</b>		
5-speed manual	X	X
6-speed DSG®	-	-
<b>Performance</b>		
Acceleration in seconds (0-100 km/h)	12,5	11,8
Top speed (km/h)	172	170
<b>Fuel Consumption</b>		
Urban cycle (litres/100km)**	9,3	6,9
Extra-urban cycle (litres / 100km)**	6,0	5,0
Combined cycle (litres / 100km)**	7,3	5,7
<b>Running Gear</b>		
Standard suspension and shock absorption	X	X
<b>Brakes</b>		
ABS (Anti-lock Braking System)	X	X
MCB (Automatic Post-Collision Braking System)	X	X
ESP (Electronic Stability Programme)	X	X
EDL (Electronic Differential Lock)	X	X
TCS (Traction Control System)	X	X
Hill hold control	-	-
<b>Wheelrims / Tyres</b>		
15" steel wheels	X	X
16" steel wheels	-	-
16" 'Fortaleza' alloy wheels	-	-
Tyres 195/65 R15 91T	X	X
Tyres 205/55 R16 94T	O	O
Full-sized spare wheel (steel)	X	X
Full-sized spare wheel (alloy)	-	-
<b>Dimensions / Capacities</b>		
Fuel tank (litres)	55	55
Length (mm)	4408	4408
Width excl. mirrors (mm)	1793	1793
Width incl. mirrors (mm)	2065	2065
Height excl. roof rails (mm)	1823	1823
Wheelbase (mm)	2682	2682
Track - front (mm)	879	879
Track - rear (mm)	847	847
Ground clearance (measured underneath the engine guard) (mm)	166	166
Loading sill over stationary level (mm)	577	577
Loading height (mm)	1244	1244
Approach angle (degrees)	17,1	17,1
Ramp angle (degrees)	14,0	14,0

# Caddy Panel Van Specifications.

X = standard O = optional - = not available

Caddy Panel Van Specification	Caddy Panel Van 1.6i 81kW SWB	Caddy Panel Van 2.0 TDI 81kW SWB
<b>Dimensions / Capacities (continued)</b>		
Departure angle (degrees)	17,3	17,3
Turning circle (m)	11,1	11,1
Load compartment width, min. / max. (mm)	1170 / 1556	1170 / 1556
Luggage compartment floor length (mm)	1779	1779
Load compartment volume (m3)	3,2	3,2
Side sliding doors, width x height (mm)	701 x 1097	701 x 1097
Tailgate, width x height (mm)	1183 x 1134	1183 x 1134
Gross Vehicle Mass (GVM) (kg)	2034	2135
Unladen weight, minimum (kg)	1272	1390
Payload, maximum (kg)	762	745
Axle load limit - Front / Rear (kg)	761 / 548	854 / 548
Trailer weight, 12% gradient - Braked / Unbraked (kg)	1500 / 700	1500 / 700
Gross train weight (kg), 12% gradient	3300	3647
Roof load limit (kg)	100	100
Trailer nose weight (kg)	80	80
<b>Seats</b>		
Number of seats	2	2
'Austin' fabric seat trim covers	X	X
Driver and front passenger seats with drawer preparation	X	X
<b>Windows</b>		
Manual windows	X	X
Electric windows and exterior mirrors	O	O
Rear window covered by opaque film from the inside (w/o window heating)	X	X
Heat-insulating glass (green)	X	X
Heat-insulating windshield made of laminated glass	X	X
<b>Wiper System</b>		
Windshield wiper with intermittent control	X	X
<b>Safety</b>		
Driver and front passenger airbags (incl. front passenger deactivation)	X	X
Rest Assist (fatigue detection)	O	O
3-point seatbelts, front	X	X
Warning buzzer and light for driver seatbelt not fastened	X	X
First aid kit and warning triangle	X	X
<b>Security</b>		
Remote-controlled central locking with SAFELOCK	X	X
Anti-theft alarm system with back-up horn, towing protection, interior monitoring and central locking (separate unlocking for driver's door)	X	X
<b>Audio and Communication</b>		
Radio preparation	X	X
'Composition Audio' radio with LCD screen and integrated USB	O	O
2 speakers	X	X
Cellphone interface	O	O

# Caddy Panel Van Specifications.

X = standard O = optional - = not available

Caddy Panel Van Specification	Caddy Panel Van 1.6i 81kW SWB	Caddy Panel Van 2.0 TDI 81kW SWB
<b>Interior Features</b>		
Manually controlled heating system	X	X
Climatic® air-conditioning system	O	O
Servotronic® power steering (speed-sensitive)	X	X
Cruise control	O	O
Multi-function display ('Plus')	O	O
Dust and pollen filter	X	X
High partition with grille	X	X
High partition without window	-	-
Centre console with 4 cup holders (2 front, 2 rear)	X	X
Plastic door trim panel and armrest	X	X
Sunvisors for driver and front passenger (w/o vanity mirror)	X	X
Glove compartment (illuminated) with lockable lid	X	X
Rubber floor covering in cab	X	X
Comfort roof headlining in cab with hardboard in load compartment	X	X
12V socket in dashboard	X	X
Smokers' package: 12V socket with cigarette lighter and ashtray	X	X
Interior lighting	X	X
Lashing rings	6	6
<b>Exterior Features</b>		
Gray bumpers	X	X
Body-coloured bumpers and mirror housings	-	-
Sliding door - left	X	X
Sliding door - right	O	O
Protective side moulding (Body-coloured on Maxi Panel Van Sport)	X	X
Exterior mirror housings, door and tailgate handles in black	X	X
Exterior mirror housings and door handles in body colour, tailgate/wing door handles in black	-	-
Roof rail preparation	X	X
Rear wing doors with windows covered by opaque film on the inside	X	X
Radiator grille (grained) with 1 chrome moulding	X	X
Exterior mirrors - adjustable from outside	X	X
Exterior mirrors - electrically adjustable and heated	O	O
Large side turn signal lights	X	X
Halogen headlights	X	X
Separate daytime running lights (permanently switched on during driving)	X	X
Front fog lamps	O	O
Towbar preparation (incl. trailer stabilisation)	O	O
<b>Options</b>		
15" 'Caloundra' alloy wheels	O	O
16" 'Bendigo' alloy wheels	O	O
Height adjustment for driver's seat	O	O
'Marathon' robust fabric seat trim covers	O	O

# Caddy Panel Van Specifications.

X = standard O = optional - = not available

Caddy Panel Van Specification	Caddy Panel Van 1.6i 81kW SWB	Caddy Panel Van 2.0 TDI 81kW SWB
<b>Options (continued)</b>		
'Mesh' leatherette seat trim covers and armrests	O	O
Curtain airbags	O	O
Park Distance Control - rear only	O	O
Climatic® air-conditioning system	O	O
Rubber floor covering in load compartment	O	O
Towbar preparation (incl. trailer stabilisation)	O	O
Fixed towbar (incl. trailer stabilisation)	O	O
Metallic paint	O	O
Sliding door - right	O	O
Electric windows and exterior mirrors	O	O
'Composition Audio' radio with LCD screen and integrated USB incl. 2 speakers	O	O
Comfort Package: Cruise control and front foglights	O	O
Communications Package I: 'Composition Colour' radio with multi-function leather* steering wheel, Bluetooth, USB iPod capable, multi-function display and Rest Assist (fatigue detetion)	O	O
Communications Package II: 'Composition Media' radio with multi-function leather* steering wheel, Bluetooth, USB iPod capable, multi-function display and Rest Assist (fatigue detetion)	-	-
Bi-xenon headlamps with seaprte LED daytime running lights and blacked-out taillights	-	-
Light & Sight Package: 'Coming/Leaving Home' function, light and rain sensor with auto-dimming rear view mirror	-	-
<b>Guarantees</b>		
2-year / unlimited km manufacturer warranty	X	X
3-year / 60,000km Genuine AutoMotion Service Plan	X	X
15,000 km service intervals	X	X
12-year anti-corrosion warranty	X	X

# Caddy Panel Van Specifications.

X = standard O = optional - = not available

Caddy Panel Van Specification	Caddy Maxi Panel Van 2.0 TDI 81kW LWB	Caddy Maxi Panel Van Sport 2.0 TDI 81kW LWB	Caddy Maxi Panel Van 2.0 TDI 103kW DSG® LWB
<b>Engine</b>			
Cylinders	4	4	4
Capacity (cm3)	1968	1968	1968
Output (kW @ r/min)	81 @ 4200	81 @ 4200	103 @ 4200
Torque (Nm @ r/min)	250 @ 1500-2500	250 @ 1500-2500	320 @ 1750-2500
CO2 emissions (g/km)**	149	149	169
<b>Transmission</b>			
5-speed manual	X	X	-
6-speed DSG®	-	-	X
<b>Performance</b>			
Acceleration in seconds (0-100 km/h)	12,1	12,1	10,4
Top speed (km/h)	170	170	186
<b>Fuel Consumption</b>			
Urban cycle (litres/100km)**	7,0	7,0	7,6
Extra-urban cycle (litres / 100km)**	5,1	5,1	5,5
Combined cycle (litres / 100km)**	5,8	5,8	6,3
<b>Running Gear</b>			
Standard suspension and shock absorption	X	X	X
<b>Brakes</b>			
ABS (Anti-lock Braking System)	X	X	X
MCB (Automatic Post-Collision Braking System)	X	X	X
ESP (Electronic Stability Programme)	X	X	X
EDL (Electronic Differential Lock)	X	X	X
TCS (Traction Control System)	X	X	X
Hill hold control	O	O	X
<b>Wheelrims / Tyres</b>			
15" steel wheels	-	-	-
16" steel wheels	X	-	X
16" 'Fortaleza' alloy wheels	-	X	-
Tyres 195/65 R15 91T	-	-	-
Tyres 205/55 R16 94T	X	X	X
Full-sized spare wheel (steel)	X	-	X
Full-sized spare wheel (alloy)	-	X	-
<b>Dimensions / Capacities</b>			
Fuel tank (litres)	55	55	55
Length (mm)	4878	4878	4878
Width excl. mirrors (mm)	1793	1793	1793
Width incl. mirrors (mm)	2065	2065	2065
Height excl. roof rails (mm)	1836	1836	1836
Wheelbase (mm)	3006	3006	3006
Track - front (mm)	879	879	879
Track - rear (mm)	993	993	993
Ground clearance (measured underneath the engine guard) (mm)	163	163	163
Loading sill over stationary level (mm)	588	588	588
Loading height (mm)	1259	1259	1259
Approach angle (degrees)	16,7	16,7	16,7
Ramp angle (degrees)	12,1	12,1	12,1

# Caddy Panel Van Specifications.

X = standard O = optional - = not available

Caddy Panel Van Specification	Caddy Maxi Panel Van 2.0 TDI 81kW LWB	Caddy Maxi Panel Van Sport 2.0 TDI 81kW LWB	Caddy Maxi Panel Van 2.0 TDI 103kW DSG® LWB
<b>Dimensions / Capacities (continued)</b>			
Departure angle (degrees)	14,8	14,8	14,8
Turning circle (m)	12,2	12,2	12,2
Load compartment width, min. / max. (mm)	1168 / 1532	1168 / 1532	1168 / 1532
Luggage compartment floor length (mm)	2249	2249	2249
Load compartment volume (m3)	4,2	4,2	4,2
Side sliding doors, width x height (mm)	701 x 1092	701 x 1092	701 x 1092
Tailgate, width x height (mm)	1183 x 1134	1183 x 1134	1183 x 1134
Gross Vehicle Mass (GVM) (kg)	2313	2313	2350
Unladen weight, minimum (kg)	1498	1498	1535
Payload, maximum (kg)	815	815	815
Axle load limit - Front / Rear (kg)	915 / 601	923 / 608	1150 / 1300
Trailer weight, 12% gradient - Braked / Unbraked (kg)	1500 / 740	1500 / 740	1500 / 750
Gross train weight (kg), 12% gradient	3650	3650	3800
Roof load limit (kg)	100	100	100
Trailer nose weight (kg)	80	80	80
<b>Seats</b>			
Number of seats	2	2	2
'Austin' fabric seat trim covers	X	X	X
Driver and front passenger seats with drawer preparation	X	X	X
<b>Windows</b>			
Manual windows	X	-	X
Electric windows and exterior mirrors	O	X	O
Rear window covered by opaque film from the inside (w/o window heating)	X	X	X
Heat-insulating glass (green)	X	X	X
Heat-insulating windshield made of laminated glass	X	X	X
<b>Wiper System</b>			
Windshield wiper with intermittent control	X	X	X
<b>Safety</b>			
Driver and front passenger airbags (incl. front passenger deactivation)	X	X	X
Rest Assist (fatigue detection)	O	O	X
3-point seatbelts, front	X	X	X
Warning buzzer and light for driver seatbelt not fastened	X	X	X
First aid kit and warning triangle	X	X	X
<b>Security</b>			
Remote-controlled central locking with SAFELOCK	X	X	X
Anti-theft alarm system with back-up horn, towing protection, interior monitoring and central locking (separate unlocking for driver's door)	X	X	X
<b>Audio and Communication</b>			
Radio preparation	X	-	X
'Composition Audio' radio with LCD screen and integrated USB	O	X	O
2 speakers	X	X	X
Cellphone interface	O	X	O

# Caddy Panel Van Specifications.

X = standard O = optional - = not available

Caddy Panel Van Specification	Caddy Maxi Panel Van 2.0 TDI 81kW LWB	Caddy Maxi Panel Van Sport 2.0 TDI 81kW LWB	Caddy Maxi Panel Van 2.0 TDI 103kW DSG® LWB
<b>Interior Features</b>			
Manually controlled heating system	-	-	-
Climatic® air-conditioning system	X	X	X
Servotronic® power steering (speed-sensitive)	X	X	X
Cruise control	O	X	O
Multi-function display ('Plus')	O	O	X
Dust and pollen filter	X	X	X
High partition with grille	-	-	-
High partition without window	X	X	X
Centre console with 4 cup holders (2 front, 2 rear)	X	X	X
Plastic door trim panel and armrest	X	X	X
Sunvisors for driver and front passenger (w/o vanity mirror)	X	X	X
Glove compartment (illuminated) with lockable lid	X	X	X
Rubber floor covering in cab	X	X	X
Comfort roof headlining in cab with hardboard in load compartment	X	X	X
12V socket in dashboard	X	X	X
Smokers' package: 12V socket with cigarette lighter and ashtray	X	X	X
Interior lighting	X	X	X
Lashing rings	8	8	8
<b>Exterior Features</b>			
Gray bumpers	X	-	X
Body-coloured bumpers and mirror housings	-	X	-
Sliding door - left	X	X	X
Sliding door - right	X	X	X
Protective side moulding (Body-coloured on Maxi Panel Van Sport)	X	X	X
Exterior mirror housings, door and tailgate handles in black	X	-	X
Exterior mirror housings and door handles in body colour, tailgate/wing door handles in black	-	X	-
Roof rail preparation	X	X	X
Rear wing doors with windows covered by opaque film on the inside	X	X	X
Radiator grille (grained) with 1 chrome moulding	X	X	X
Exterior mirrors - adjustable from outside	X	-	X
Exterior mirrors - electrically adjustable and heated	O	X	O
Large side turn signal lights	X	X	X
Halogen headlights	X	X	X
Separate daytime running lights (permanently switched on during driving)	X	X	X
Front fog lamps	O	X	O
Towbar preparation (incl. trailer stabilisation)	O	X	O
<b>Options</b>			
15" 'Caloundra' alloy wheels	-	-	-
16" 'Bendigo' alloy wheels	O	O	O
Height adjustment for driver's seat	O	O	O
'Marathon' robust fabric seat trim covers	O	O	O



# Caddy Panel Van Specifications.

X = standard O = optional - = not available

Caddy Panel Van Specification	Caddy Maxi Panel Van 2.0 TDI 81kW LWB	Caddy Maxi Panel Van Sport 2.0 TDI 81kW LWB	Caddy Maxi Panel Van 2.0 TDI 103kW DSG® LWB
<b>Options (continued)</b>			
'Mesh' leatherette seat trim covers and armrests	O	O	O
Curtain airbags	O	O	O
Park Distance Control - rear only	O	O	O
Climatic® air-conditioning system	X	X	X
Rubber floor covering in load compartment	O	O	O
Towbar preparation (incl. trailer stabilisation)	O	X	O
Fixed towbar (incl. trailer stabilisation)	O	O	O
Metallic paint	O	O	O
Sliding door - right	X	X	X
Electric windows and exterior mirrors	O	X	O
'Composition Audio' radio with LCD screen and integrated USB incl. 2 speakers	O	X	O
Comfort Package: Cruise control and front foglights	O	X	O
Communications Package I: 'Composition Colour' radio with multi-function leather* steering wheel, Bluetooth, USB iPod capable, multi-function display and Rest Assist (fatigue detection)	O	O	O
Communications Package II: 'Composition Media' radio with multi-function leather* steering wheel, Bluetooth, USB iPod capable, multi-function display and Rest Assist (fatigue detection)	O	O	O
Bi-xenon headlamps with separate LED daytime running lights and blacked-out taillights	O	O	O
Light & Sight Package: 'Coming/Leaving Home' function, light and rain sensor with auto-dimming rear view mirror	O	O	O
<b>Guarantees</b>			
2-year / unlimited km manufacturer warranty	X	X	X
3-year / 60,000km Genuine AutoMotion Service Plan	X	X	X
15,000 km service intervals	X	X	X
12-year anti-corrosion warranty	X	X	X
<b>Disclaimer</b>			
<p><b>Dimensions, capacities and abilities apply to standard vehicles. Actual consumption will vary with vehicle loading, driving style, climatic and road conditions. The above information is effective as at January 2018 and is subject to change.</b></p>			

# Prices & Options.

Prices are inclusive of CO2 tax and 14% VAT  
 X = standard O = optional - = not available

Recommended Retail Prices	Caddy Panel Van 1.6i 81kW SWB	Caddy Panel Van 2.0 TDI 81kW SWB
Recommended Retail price	R276,600	R314,100
ABS (Anti-lock Braking System)	x	x
MCB (Automatic Post-Collision Braking System)	x	x
ESP (Electronic Stability Programme)	x	x
15" steel wheels	x	x
Number of seats: 2	x	x
Metallic / Pearlescent Paint	R3,850	R3,850
Fixed towbar	R5,200	R5,200
Towbar Preparation	R3,800	R3,800
15" Alloy "Caloundra" wheels	R4,800	R4,800
16" Alloy "Bendigo" wheels	R8,400	R8,400
Second sliding door	R4,950	R4,950
Rear Park distance control	R4,300	R4,300
Comfort Package: Cruise control, front foglights and multi-function display ('Plus')	R6,100	R6,100
Climatic Air-conditioning system (semi-automatic)	R10,600	R10,600
Composition Audio' radio with LCD screen	R2,100	R2,100
Communications Package I: 'Composition Colour' radio with multi-function leather* steering wheel, Bluetooth and Rest Assist (fatigue detetion)	R12,650	R12,650
Power windows and exterior mirrors	R9,050	R9,050
Rubber floor covering in load area	R2,050	R2,050
Curtain airbags	R4,700	R4,700
Height adjustment for driver's seat	R1,050	R1,050
Seat trim covers in leatherette "Mesh", and leatherette armrests	R1,450	R1,450
Seat trim covers in Robust Marathon	R1,050	R1,050

# Prices & Options.

Prices are inclusive of CO2 tax and 14% VAT  
X = standard O = optional - = not available

Recommended Retail Prices	Caddy Maxi Panel Van 2.0 TDI 81kW LWB	Caddy Maxi Panel Van Sport 2.0 TDI 81kW LWB	Caddy Maxi Panel Van 2.0 TDI 103kW DSG® LWB
Recommended Retail price	R342,200	R366,100	R370,700
ABS (Anti-lock Braking System)	x	x	x
MCB (Automatic Post-Collision Braking System)	x	x	x
ESP (Electronic Stability Programme)	x	x	x
16" steel wheels	x	x	x
Number of seats: 2	x	x	x
Metallic / Pearlescent Paint	R3,850	R3,850	R3,850
Fixed towbar	R5,200	R5,200	R5,200
Towbar Preparation	R3,800	x	R3,800
Lights & Vision package: 'Coming/Leaving Home' function, light and rain sensor with auto-dimming rear view mirror	R5,100	R5,100	R5,100
Bi-xenon headlamps with separate LED daytime running lights; blacked out taillights	R11,950	R11,950	R11,950
16" Alloy "Bendigo" wheels	R8,400	No Cost	R8,400
Second sliding door	X	x	x
Rear Park distance control	R4,300	R4,300	R4,300
Comfort Package: Cruise control, front foglights and multi-function display ('Plus')	R6,100	x	R6,100
Climatic Air-conditioning system (semi-automatic)	x	x	x
'Composition Audio' radio with LCD screen	R2,100	x	R2,100
Communications Package I: 'Composition Colour' radio with multi-function leather* steering wheel, Bluetooth and Rest Assist (fatigue detetion)	R12,650	R8,900	R12,650
Communications Package II: 'Composition Media' radio with multi-function leather* steering wheel, Bluetooth and Rest Assist (fatigue detetion)	R16,400	R16,400	R16,400
Power windows and exterior mirrors	R9,050	x	R9,050
Rubber floor covering in load area	R2,050	R2,050	R2,050
Curtain airbags	R4,700	R4,700	R4,700
Height adjustment for driver's seat	R1,050	R1,050	R1,050
Seat trim covers in leatherette "Mesh", and leatherette armrests	R1,450	R1,450	R1,450
Seat trim covers in Robust Marathon	R1,050	R1,050	R1,050

# Prices & Options.

Prices are inclusive of CO2 tax and 14% VAT  
 X = standard O = optional - = not available

<b>Volkswagen Optional &amp; Extended Automotion Maintenance Plans</b>	<b>Caddy Panel Van 1.6i 81kW SWB</b>	<b>Caddy Panel Van 2.0 TDI 81kW SWB</b>
Optional Maintenance Plant (3-year / 45 000km)	R10,260	R10,260
Optional Maintenance Plan (5-year / 60 000km)	R13,680	R13,680
Maintenance Plan Extension (60 000km to 80 000km)	R23,256	R23,256
Maintenance Plan Extension (1-year)	R13,930	R13,930
Maintenance Plan Extension (1-year / 60 000km Combo)	R22,038	R22,038

<b>Volkswagen Optional &amp; Extended Automotion Service Plans</b>	<b>Caddy Panel Van 1.6i 81kW SWB</b>	<b>Caddy Panel Van 2.0 TDI 81kW SWB</b>
Service Plan Extension (45 000km to 60 000km)	R10,038	
Service Plan Extension (60 000km to 75 000km)	R11,432	R9,002
Service Plan Extension (75 000km to 90 000km)	R23,256	R23,256
Service Plan Extension (1-year)	R1,394	R1,550

# Prices & Options.

Prices are inclusive of CO2 tax and 14% VAT  
 X = standard O = optional - = not available

<b>Volkswagen Optional &amp; Extended Automotion Maintenance Plans</b>	<b>Caddy Maxi Panel Van 2.0 TDI 81kW LWB</b>	<b>Caddy Maxi Panel Van Sport 2.0 TDI 81kW LWB</b>	<b>Caddy Maxi Panel Van 2.0 TDI 103kW DSG® LWB</b>
Optional Maintenance Plant (3-year / 45 000km)	R10,260	R10,260	R10,260
Optional Maintenance Plan (5-year / 60 000km)	R13,680	R13,680	R13,680
Maintenance Plan Extension (60 000km to 80 000km)	R23,256	R23,256	R23,256
Maintenance Plan Extension (1-year)	R13,930	R13,930	R13,930
Maintenance Plan Extension (1-year / 60 000km Combo)	R22,038	R22,038	R22,038

<b>Volkswagen Optional &amp; Extended Automotion Service Plans</b>	<b>Caddy Maxi Panel Van 2.0 TDI 81kW LWB</b>	<b>Caddy Maxi Panel Van Sport 2.0 TDI 81kW LWB</b>	<b>Caddy Maxi Panel Van 2.0 TDI 103kW DSG® LWB</b>
Service Plan Extension (45 000km to 60 000km)	R10,038	R10,038	R10,038
Service Plan Extension (60 000km to 75 000km)	R9,002	R9,002	R9,002
Service Plan Extension (75 000km to 90 000km)	R23,256	R23,256	R23,256
Service Plan Extension (1-year)	R1,550	R1,550	R1,550

---

# The Caddy Crew Bus.

---

**Low  
fuel  
consumption.**

Averaging from 5.7 to 8.2l/100 km\*.



**Cleverly  
thought-out  
storage system.**

Several storage possibilities  
in the interior.



**Unique  
drive  
concept.**

DSG® dual clutch gearbox.

DSG



# The Caddy Panel Van.

## High payload.

Up to 815 kg in the New Caddy Maxi Panel Van.



## Standards of safety.

Includes driver and front passenger airbags and Multi-Collision Braking (MCB) System as standard.



## Long load compartment.

Up to 2,249 mm in the Caddy Maxi.



## Maximum functionality and flexibility.

Front passenger seat with folding, double-folding and removable rear seats, wide sliding door which comes standard on the Caddy Crew Bus and Caddy Maxi Crew Bus.



\*Fuel consumption and CO<sub>2</sub> emissions values were obtained in accordance with the prescribed uniform measuring standard (SANS 20101: 2006 / ECE R101: 2005 in its currently applicable version). The verified values do not apply to a specific vehicle and do not constitute part of the product offer. They are provided solely for the purposes of comparison between different vehicle models. Because of the need to maintain strict comparability of results achieved by the standard tests, they cannot be fully representative of real-life driving conditions. Variations in driving styles and in road, vehicle and ambient conditions, will have a bearing on the results achieved on the road. For these reasons consumption achieved on the road will not necessarily accord with these verified values. Based on lightest variable (no options) and 90% tank filling. Weight may vary depending on options fitted to vehicle.

---

Caddy.

# Getting the job done.

---

Each day brings countless new challenges, which call for quick and professional solutions. With the Caddy Panel Van and the Caddy Crew Bus you have two vehicles that provide the best support in virtually every situation. More functional, flexible and versatile than ever before, the manoeuvrable and compact light commercial vehicles offer you everything you need to convey a professional image to your customers.



The Caddy Panel Van





**The Caddy Crew Bus**



---

Confident driving. For all customers.

## The design.

---

No matter what industry you work in, the Caddy always exudes a high degree of competence and dependability. This is achieved through its sharper and clearer lines, dynamic front, and redesigned back end. The Caddy Panel Van and Crew Bus come standard with rear wing doors, with a tailgate optionally available on the Crew Bus. Further highlights include the chrome trim strip on the radiator grille, and the striking headlights.

---

Comfortable during work and after hours.

# The interior.

---

The Caddy has been thoroughly enhanced – outside and inside.

The new, high-quality finish on the cockpit impresses with its clearly arranged instrument cluster and easy-grip steering wheel with sporty flat bottom. This can be adjusted to individual

preferences, and promotes a natural seating position.

Ergonomically designed seats – available optionally with robust cloth upholstery – and ample head and leg room, as well as improved interior acoustics contribute to greater overall

driving comfort. Specially contoured and patented headrests are an additional safety feature for passengers.



---

Keeping you organised and on schedule.

# The cleverly thought-out storage system.

---

In any and every job, efficiency and organisation is key.

The Caddy offers you the support you need, with a storage system made up of several storage compartments and surfaces of varying sizes. Take, for instance, the roof shelf, which extends across the full width of the vehicle, and opens directly above the driver and front passenger seats. Invisible from outside, it offers sufficient space for work gloves, a lunchbox, or a notebook computer.

The storage pockets in the doors can hold a 1-litre bottle each, while the centre console is equipped with four cup holders.

For the first time, two open glove compartments are also included. This keeps everything in the right place.



Quick and easy loading. From all sides.

# The wide sliding door and tail-end solutions.

Hop in, hop out. Load, unload. The doors of a commercial vehicle are opened and closed repeatedly over the course of a day – and heavily strained in the process. That is why the Caddy is built with hinges, rails and handles that are equal to the most demanding conditions. The low loading sill height, and numerous door variants are also a testament to this. The Caddy Panel Van and Crew Bus both come standard with rear wing doors, with the Crew Bus featuring a large back window and also available with tailgate. The tailgate is equipped with a soft touch closing system as standard for effortless loading and unloading. Dual sliding doors are a standard feature across the Caddy Crew Bus range, on the Caddy Maxi Panel Van and Panel Van Sport. The short wheelbase Caddy Panel Van comes standard with a sliding door on the left with the option of a sliding door on the right.

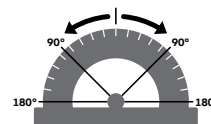
Up to **2**  
sliding doors



Rear wing doors

**180°**

opening angle and  
secure locking



Rear wing doors (½ to ¾) with glass windows come standard on the Caddy Crew Bus.



Rear wing doors

Rear wing doors (½ to ¾) come standard on the Caddy Panel Van.



Tailgate with glass windows for the Caddy Crew Bus (optional).

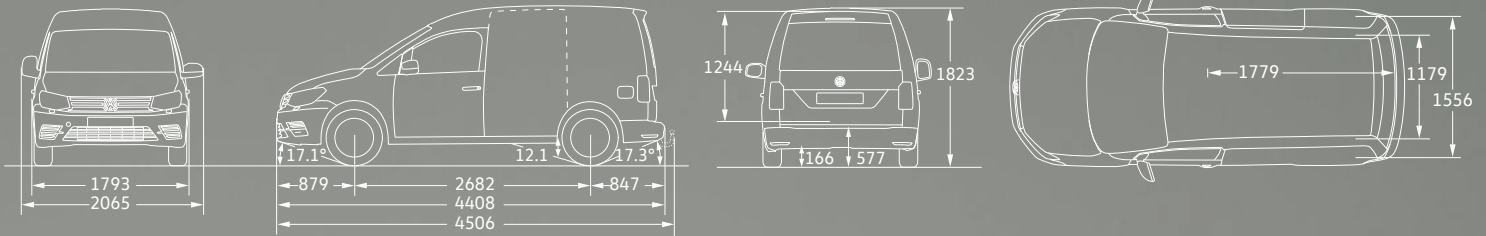


Tailgate

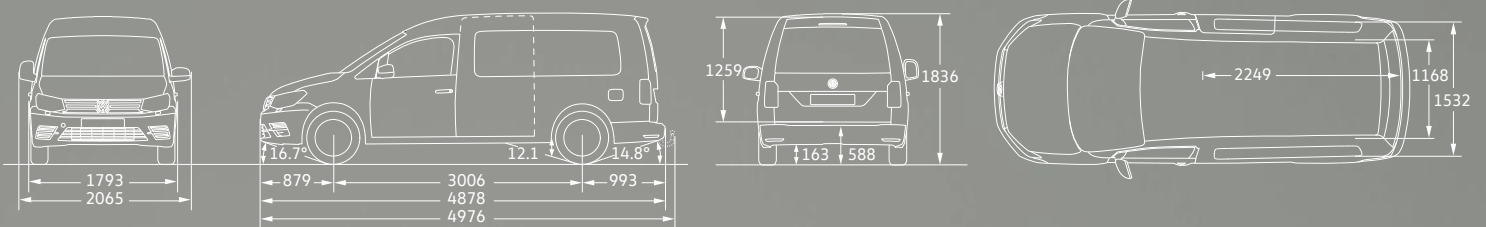


# Dimensions.

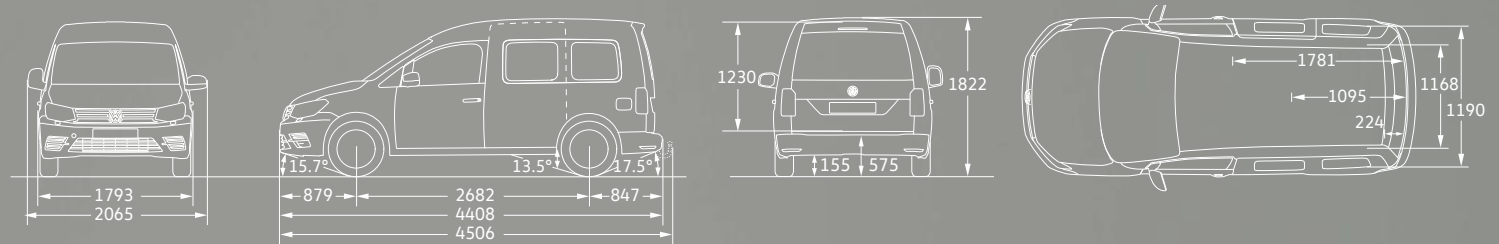
## Caddy Panel Van



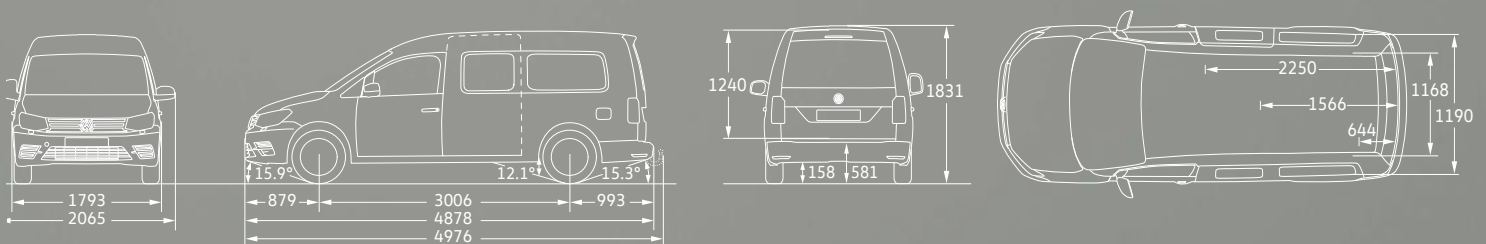
## Caddy Maxi Panel Van



## Caddy Crew Bus



## Caddy Maxi Crew Bus



Measurements are in millimetres. The dimensional drawings partially show optional extras. All measurements listed are based on series vehicles. The height measurements listed may vary by  $\pm 50$  mm depending on equipment fitted. The information about the degree of slope angle front and rear as well as the ramp angle each refer to the loaded condition of the vehicle in consideration of the gross vehicle weight. The vehicle drawings are not to scale.

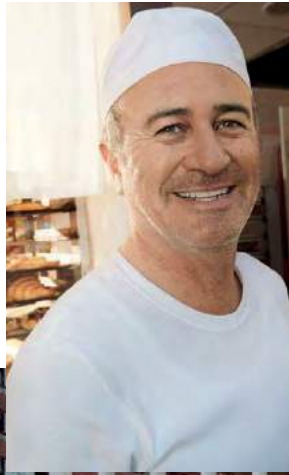
---

Up to 4.2 m<sup>3</sup> in volume,  
815 kg payload and eight lashing rings.

# The Caddy Panel Van.

---

Big, yet compact: The load compartment of the Caddy Panel Van triumphs with its impressive volume and range of loading options. Even with the short wheelbase, it offers a load capacity of 3.2 m<sup>3</sup>, which increases to 4.2 m<sup>3</sup> for the Caddy Maxi Panel Van. The level load compartment is accessible through the tailgate, or the windowless roof-height sliding door on the front passenger side. This guarantees complete privacy, and prevents possible break-ins.



**Caddy Panel Van**

**Caddy Maxi Panel Van**

# Form and function.

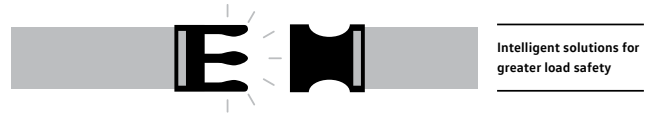
The Caddy Panel Van boasts a generous load compartment, which can be equipped according to your needs. Standard equipment includes rubber flooring in the cab, partitioning and six to eight lashing rings. The Caddy Panel Van is suitable for conversions and, in practically no time at all, it can be converted into a fully functional service vehicle for repair services, installation work and many other industries.



**01 Lashing rings.** The load compartment has six to eight fold-down lashing rings that are securely mounted to the vehicle floor. You can fix tools and materials securely, in compliance with



**02 Rubber floor.** The optional protective layer made from easy-cleaning plastic is precisely tailored to the contours of the ribbed floor surface. The rubber material also has good







4.2 m<sup>3</sup>



3.2 m<sup>3</sup>

4,478 mm  
vehicle length  
in the Caddy Panel Van

4,878 mm  
vehicle length in the  
Caddy Maxi Panel Van

Extended load compartment. High towing capacity. Excellent payload.

## The Caddy Maxi Panel Van.

Those who frequently transport heavy or bulky goods will appreciate the high payload and large load compartment volume of the Caddy Maxi Panel Van. Compared to the Caddy Panel Van with short wheelbase, the load volume capacity is 1 m<sup>3</sup> greater at 4.2 m<sup>3</sup>. Eight built-in lashing rings are provided in the load compartment floor to ensure that the load is secured in compliance with regulations. Compatible tensioning belts and safety nets are available on request from your Volkswagen Commercial Vehicles Dealership. With the Caddy Maxi Panel Van you can tow a braked trailer load of up to 1,500 kg.



Up to

**762 kg**

payload

**Caddy Panel**



Up to

**815 kg**

payload

**Caddy Maxi Panel Van**



---

For those that want to stand out from the crowd.

## **The Caddy Maxi Panel Van Sport.**

---

Life is more exciting in the Caddy Maxi Panel Van Sport. With body-coloured bumpers and mirror housings, 16" 'Fortaleza' alloy wheels and front fog lights, work has never looked this good. With so many convenient features, like electric windows and exterior mirrors, dual sliding doors for easy access and a Composition Audio radio, getting the job done has never been this comfortable.



---

Up to seven seats. Plenty of storage compartments. All of the highest quality.

# The short wheelbase Caddy Crew Bus.

---

No other vehicle in its class combines versatility, flexibility and solidity as perfectly as the Caddy Crew Bus. The hard-wearing interior can be extended from five up to an optional seven seats and, with just a few adjustments, can also be converted into a 2-seater with a 3.2 m<sup>3</sup> load compartment if you need to deliver larger goods or materials. Even smaller items can be quickly and securely stored away. Your handy clipboard is stored neatly in the roof shelf and the invoice book is within arm's length in one of two glove compartments.



---

# Maximum flexibility.

Versatile interior. Well thought-out down to the last detail.

---

Every customer order is different. That is why the Caddy Crew Bus is so flexible.

In just a few minutes it can be transformed from a comfortable 5-seater into a fully fledged delivery van. There is no end to the various layout options. This is because of the separately folding and double-folding bench seats in the passenger compartment, which can be individually removed if necessary. For those who not only want to carry people in their Caddy Crew Bus, but also transport materials and tools, the passenger compartment is equipped with an anti-slip rubber floor. The load can be easily secured to the four fold-down lashing rings with the help of tensioning belts or nets.



**01 Folding and double-folding 3-seater bench seat.** The bench seat in the second row of seats consists of a single seat and a 2-seater bench seat. Both parts can be folded, double-folded and removed separately from one another. By removing the 3-seater bench seat completely, a generously sized level load platform is created.

| CB |





4,408 mm  
vehicle length  
in the Caddy Crew Bus

4,878 mm  
longer in the  
Caddy Maxi Crew Bus

Extra length. Extra versatility.

# The Caddy Maxi Crew Bus.

Big tasks demand big vehicles. That is why the Caddy Crew Bus is also available in a longer variant: the Caddy Maxi Crew Bus. Equipped with five comfortable seats, dual sliding doors and a 4.1 m<sup>3</sup> large load compartment with six lashing rings as standard, there is also a variety of seating configurations to choose from. An additional 2-seater bench seat for the third row is optionally available.

Three-point seatbelts, and specially contoured and patented headrests on all seats provide the necessary level of safety while driving. Driver and front passenger airbags come standard on the Caddy Crew Bus. Side and curtain airbags come as an optional extra. After all, safety in the workplace always takes top priority for us.



# The standard equipment.



## Caddy Panel Van.

- 5-speed manual
- Multi-Collision Braking (MCB) System
- 15" steel wheels
- 2 seats
- Manual windows
- Driver and front passenger airbags (including front passenger deactivation)
- Radio preparation
- Manually controlled heating system
- Servotronic® power steering (speed-sensitive)
- 6 lashing rings
- Left sliding door
- Roof rail preparation
- Rear wing doors with windows covered by opaque film on the inside
- Separate daytime running lights (permanently switched on during driving)
- 2-year / unlimited km manufacturer warranty
- 3-year / 60,000km Genuine AutoMotion Service Plan



## Caddy Maxi Panel Van.

- 5-speed manual
  - Multi-Collision Braking (MCB) System
  - 16" steel wheels
  - 2 seats
  - Manual windows
  - Driver and front passenger airbags (including front passenger deactivation)
  - Radio preparation
  - Climatic® airconditioning system
  - Servotronic® power steering (speed-sensitive)
  - 8 lashing rings
  - Dual sliding doors
  - Roof rail preparation
  - Rear wing doors with windows covered by opaque film on the inside
  - Separate daytime running lights (permanently switched on during driving)
  - 2-year / unlimited km manufacturer warranty
  - 3-year / 60,000km Genuine AutoMotion Service Plan
- The Caddy Maxi Panel Van is also available with DSG®, which, in addition to the above, includes:**
- 6-speed DSG®
  - Rest Assist (fatigue detection)
  - 'Plus' multifunction display



## Caddy Maxi Panel Van Sport.

- 5-speed manual
- Multi-Collision Braking (MCB) System
- 16" 'Fortaleza' alloy wheels
- 2 seats
- Electric windows and exterior mirrors
- Driver and front passenger airbags (including front passenger deactivation)
- 'Composition Audio' radio with LCD screen
- Climatic® airconditioning system
- Servotronic® power steering (speed-sensitive)
- 8 lashing rings
- Dual sliding doors
- Roof rail preparation
- Rear wing doors with windows covered by opaque film on the inside
- Separate daytime running lights (permanently switched on during driving)
- Tow bar preparation (incl. trailer stabilisation)
- 2-year / unlimited km manufacturer warranty
- 3-year / 60,000km Genuine AutoMotion Service Plan

# The standard equipment.



## Caddy Crew Bus.

- 5-speed manual
- Multi-Collision Braking (MCB) System
- 15" steel wheels
- 7 seats (optional on 1.6i model, standard on the 2.0 TDI)
- Manual windows
- Driver and front passenger airbags (including front passenger deactivation)
- 'Composition Audio' radio with LCD screen
- Climatic® airconditioning system
- Servotronic® power steering (speed-sensitive)
- 4 lashing rings
- Dual sliding doors
- Roof rail preparation
- Rear wing doors with windows
- Separate daytime running lights (permanently switched on during driving)
- 2-year / unlimited km manufacturer warranty
- 3-year / 60,000km Genuine AutoMotion Service Plan (not applicable to 1.6i model)



## Caddy Maxi Crew Bus.

- 5-speed manual
  - Multi-Collision Braking (MCB) System
  - 16" steel wheels
  - 5 seats
  - Manual windows
  - Driver and front passenger airbags (including front passenger deactivation)
  - 'Composition Audio' radio with LCD screen
  - Climatic® airconditioning system
  - Servotronic® power steering (speed-sensitive)
  - 6 lashing rings
  - Dual sliding doors
  - Roof rail preparation
  - Rear wing doors with windows
  - Separate daytime running lights (permanently switched on during driving)
  - 2-year / unlimited km manufacturer warranty
  - 3-year / 60,000km Genuine AutoMotion Service Plan
- The Caddy Maxi Crew Bus is also available with DSG®, which, in addition to the above, includes:**
- 6-speed DSG®
  - Rest Assist (fatigue detection)
  - 'Plus' multifunction display

---

# Engines.

---

## DSG<sup>®</sup> for 103 kW engines.



**Dual clutch gearbox DSG<sup>®</sup>.** Thanks to the intelligent gearshift system, the 6-speed gearbox changes fluidly at the right time to the next preselected gear. The gears can also be changed with a light tap.

---

### 1.6 l petrol (81 kW)

Average fuel consumption:  
from 7.3 to 8.2 l/100 km

### 2.0 l TDI (81 kW)

Average fuel consumption:  
from 5.7 to 5.8 l/100 km

### 2.0 l TDI (103 kW)

Average fuel consumption:  
from 6.3 l/100 km

## TDI

**The TDI engines.** The fuel-efficient 2.0 l turbo diesel engines with common rail direct injection are available in several performance levels. The 81 kW and 103 kW versions have impressive fuel consumption and emissions values. The 103 kW engines can be combined with the dual clutch gearbox DSG<sup>®</sup>.

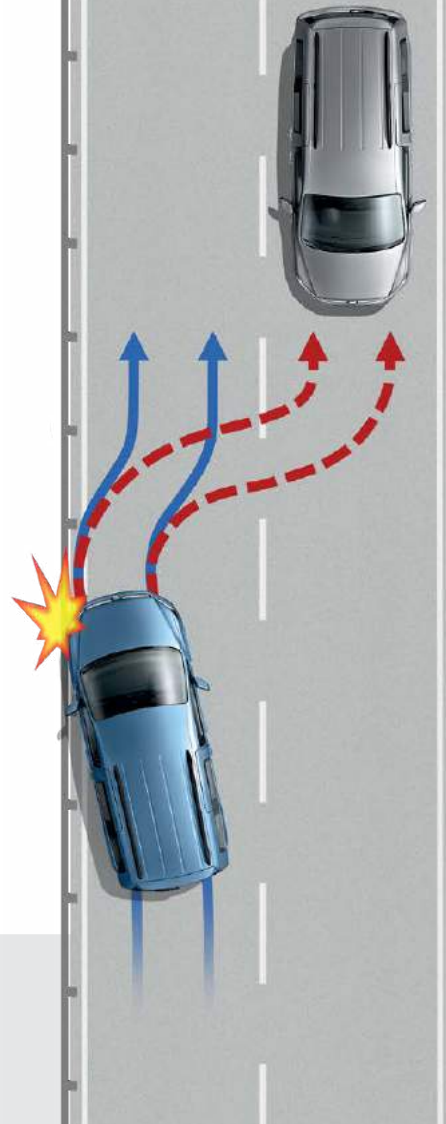




Safe. Even in critical situations.

# The safety systems.

To ensure that every drive ends as stress-free as it begins, the Caddy is equipped with various safety systems, which are activated in critical situations as a preventative measure. New to the onboard standard equipment is the Multi-Collision Braking System. Following an accident, the vehicle begins a phased braking action down to 10 km/h in order to prevent secondary collisions. Should an impact nonetheless result, driver and front passenger airbags come standard. Curtain airbags are optional on all Panel Van models and side and curtain airbags are optional for the driver and front passenger on all Crew Bus models. New contoured and patented headrests will provide optimal protection to passengers.



#### Electronic Stabilisation Programme (ESP).

It prevents under- or over-steering via targeted braking of individual wheels.

| PV | PVS | CB |



#### Anti-lock Braking System (ABS).

Prevents wheel block and, thus, maintains manoeuvrability.

| PV | PVS | CB |



**Electronic Differential Lock (EDL).** Distributes the engine torque to the tyres without slippage.

| PV | PVS | CB |



**Traction Control System (TCS).** Prevents wheelspin.

| PV | PVS | CB |



#### Multi-Collision Braking (MCB) System.

Triggers braking after a collision, with the aim of preventing secondary collisions.

The Multi-Collision Braking System activates when two independent sensors detect an accident. After a short delay, the vehicle begins a phased braking action down to 10 km/h, during which the driver can take over at any time.

| PV | PVS | CB |



**Seat belt warning.** If their seat belts are not fastened, the seat belt warning reminds the driver and, for the first time, the front passenger to fasten their belts with a visual warning when the engine is started, and an acoustic warning after setting off.

| PV | PVS | CB |



**Airbags.** Driver and front passenger airbags offer the occupants of the cockpit the best possible protection in the event of head-on impacts. The front passenger airbag can be deactivated using the vehicle key.

| PV | PVS | CB |

Comfort on the job and on the road.

# The driver assistance systems.

The Caddy can be fitted with a range of innovative driver assistance systems on request. These constantly analyse driving behaviour, so as to be able to intervene to assist the driver if necessary. Therefore, you and your passengers have even greater comfort on the road.



**01 Rear Park Distance Control (PDC).** Emits audible warnings when obstacles are detected behind the vehicle when parking, and also provides a visual display of the vehicle's distance from the obstacles.

| PV | PVS | CB |



**02 "Rear View" reversing camera.** Simplifies parking by showing a limited view of the area behind the vehicle on the display of the radio system. Additional static guidelines facilitate the parking process. The reversing camera is only available in combination with the tailgate.

| PV | PVS | CB |

**Fog lights.** Ensures optimal visibility in poor weather conditions.

| PV | PVS | CB |



**Driver Alert System.** Uses visual and acoustic warning signals to recommend that the driver takes a break as soon as it registers driving behaviour that indicates fatigue.

| PV | PVS | CB |



**Brake Assist System.** Registers the speed at which the brake pedal is pressed. During a reflexive or emergency braking action, it ensures that full brake pressure is built up more quickly.

| PV | PVS | CB |



**Daytime running lights.** Switch on automatically when the ignition is activated and lower the risk of an accident in daylight.

| PV | PVS | CB |



**Hill Start Assist.** Prevents the vehicle from rolling back on inclines and makes handling easier when starting up on uphill slopes (available on DSG® models only).

| PV | CB |



**Cruise control.** As of a speed of 30 km/h, it maintains the desired speed depending on uphill and downhill inclines or limits the top speed to a value selected by the driver.

| PV | PVS | CB |

# Infotainment.

**01 Mobile phone interface** (not illustrated). A wireless Bluetooth interface enables you to make phone calls safely and conveniently during the journey using a microphone and the vehicle loudspeakers. | PV | PVS | CB |



**02 "Comfort" mobile phone interface.** The special compartment for your mobile phone has a wireless external aerial connection to optimise your mobile phone reception. Charging the phone is straightforward too: The phone simply has to be connected to the USB port, which is also located in the compartment.

| PV | PVS | CB |



**03 Leather-covered multifunction steering wheel.** It gives you a good grip and is extremely user-friendly. The radio, a mobile phone or the cruise control can be controlled using the buttons.

| PV | PVS | CB |

**04 "Plus" multifunction display** (not illustrated). In addition to the functions of the multifunction display, it can be used to adjust the optional Light & Sight package. Standard on DSG® models only and available as an option across the rest of the range.

| PV | PVS | CB |

**05 Multifunction display** (not illustrated). It shows current information such as the time, remaining range, outside temperature, average consumption, and a gear recommendation for more fuel-efficient driving. Optional across the range with the exception of DSG® models.

| PV | PVS | CB |

**06 "Composition Audio" radio system.** The system consists of a TFT monochrome display, a 2 x 20 Watt output with two loudspeakers, an SD-card slot, an AUX-IN interface and a USB port. Optional on 1.6i Caddy Crew Bus.

| PV | PVS | CB |

**07 "Composition Colour" radio system.** The system consists of a 12.7 cm (5-inch) TFT colour display with touchscreen function, an MP3- and WMA-compatible CD drive, a 4 x 20 Watt output with two loudspeakers, an SD-card slot, an AUX-IN interface, and a dual tuner with PhaseDiversity for optimal radio reception. A Bluetooth connection for a mobile phone is standard.

| CB |





**08 "Composition Media" radio system.** The system consists of a 16.5 cm (6.33-inch) TFT colour display, a touchscreen with proximity sensor, an MP3- and WMA-compatible CD drive, a 4 x 20 Watt output with four loudspeakers, a dual tuner with PhaseDiversity for optimal radio reception, an SD-card slot, an AUX-IN interface, a USB port and a Bluetooth connection for mobile phones. Available on Caddy Maxi Crew Bus models only.  
| CB |

# Comfort.



**01 Lockable glove compartment.** Documents and valuable items can be kept safe behind the lockable lid, so that they cannot be seen from outside the vehicle.

| PV | PVS | CB |

**02 Electric windows.** The flip switches are comfortably located within easy reach in the armrest on the door interiors, and have a comfort switch with jamming protector. Along with the electrically adjustable and heated exterior mirrors, these make up the Electric package.

| PV | PVS | CB |

**03 Soft-touch opening system** (not illustrated). The tailgate is opened effortlessly using a button on the underside of the number plate light holder.

| PV | CB |



**06 Airconditioning.** The semi-automatic airconditioning has an infinite adjustment, so that a pleasant interior temperature can be ensured at all times.

| PV | PVS | CB |



**04 Light & Sight package** (not illustrated). Sensors dim the rear-view mirror when the lights of the vehicle behind are too bright, and regulate the intervals of the windscreen wipers during rain. The automatic driving light control with daytime running lights switches the headlights on automatically when it starts to get dark. The package also features the manual “coming home” and “leaving home” functions. Available on Caddy Maxi Panel Van and Caddy Maxi Panel Van Sport models.

| PV | PVS |

**05 230 V socket, front** (not illustrated). A 230 V socket is integrated into the open or closed glove compartment for charging mobile phones, navigation devices or laptops.

| PV | PVS | CB |



**07 12 V socket in compartment, front.** A 12 V socket is integrated into the open storage compartment on the dash panel, e.g. for mobile phones or notebooks.

| PV | PVS | CB |

# Exterior.



**01 Tow bar preparation** (not illustrated). The trailer detection control unit and professional wiring allow a trailer coupling to be easily retrofitted at any time.

| PV | PVS | CB |

**02 Fixed tow bar.** It is designed for trailer loads from 660 kg (unbraked) to 1,500 kg (braked), and is also fitted with trailer stabilisation.

| PV | PVS | CB |



**03 Bi-Xenon headlights.** The Bi-Xenon headlights produce both high and low beams, and illuminate the roadway significantly better than conventional halogen headlights. They also stand out due to their low energy consumption and high durability. Only available in conjunction with tinted tail lights and the Caddy Maxi Panel Van models.

| PV | PVS |



**04 Fog lights.** They ensure a wide illumination of the roadway in thick fog, snow or heavy rain, and make safe driving easier.

| PV | PVS | CB |

# Wheels.



## 01 Steel wheel

6 J x 15 with 195/65 R15 tyre.  
Standard on short wheelbase models only.  
| PV | CB |

## 02 "Caloundra" alloy wheel

6 J x 15 with 195/65 R15 tyre. Optional  
on short wheelbase models only.  
| PV | CB |

## 03 Steel wheel

6 J x 16 with 205/55 R16 tyre. Standard  
on Maxi Panel Van and Maxi Crew Bus  
models only.  
| PV | CB |

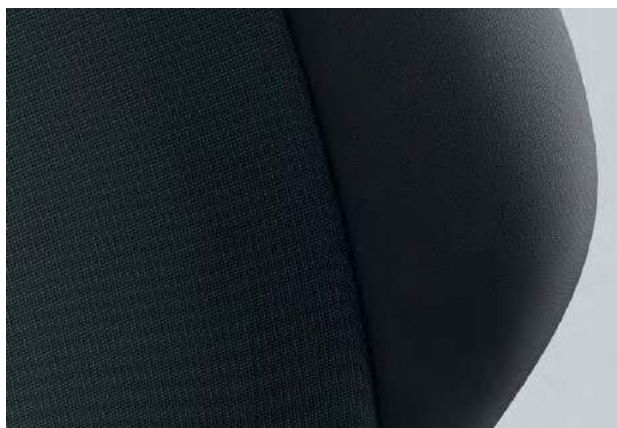
## 04 "Bendigo" alloy wheel

6 J x 16 with 205/55 R16 tyre.  
Optional on Maxi Panel Van and Maxi  
Crew Bus models only.  
| PV | PVS | CB |

## 05 "Fortaleza" alloy wheel

6 J x 16 with 205/55 R16 tyre.  
| PVS |

# Seat upholstery



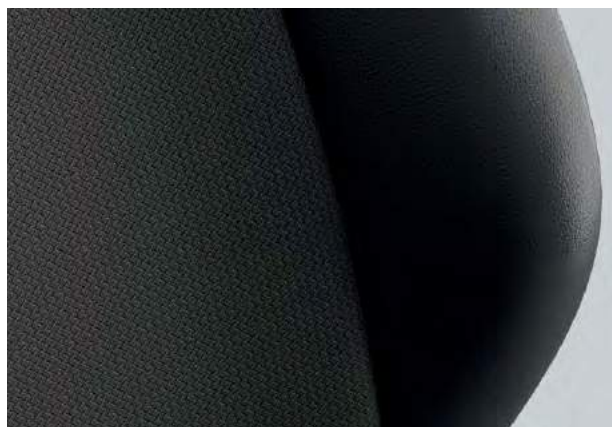
**Austin** | Cloth seat upholstery | Titanium Black | PV | PVS | CB |



**Marathon** | Cloth seat upholstery | Titanium Black | PV | PVS |



**Marathon** | Strong cloth seat upholstery  
Titanium Black | PV | PVS |



**Mesh** | Leatherette seat upholstery | Titanium Black | PV | PVS | CB |



# Paint finishes.

## Solid paint finishes



Candy White | Solid paint finish



Pure Grey | Solid paint finish



Cherry Red | Solid paint finish



Bright Orange | Solid paint finish

## Metallic paint finishes



Indium Grey | Metallic paint finish



Chestnut Brown | Metallic paint finish



Reflex Silver | Metallic paint finish



Bamboo Garden Green | Metallic paint finish



Starlight Blue | Metallic paint finish



Acapulco Blue | Metallic paint finish



Black Berry | Metallic paint finish



Fortana Red | Metallic paint finish



Sandstorm Yellow | Metallic effect paint finish

## Pearl effect paint finish



Deep Black | Pearl effect paint finish

**This information was effective as at January 2018 and is subject to change without notice.  
Visit us at [vw.co.za](http://vw.co.za)  
©Volkswagen South Africa**

Vehicle Tare mass given at 90% tank filling without driver (75kg). Selected optional extras increase the unloaded weight of the vehicle.

**\*Fuel Consumption and Carbon Dioxide Emission Figures**

The figures reflected were obtained in accordance with prescribed uniform measuring standards (SANS 20101: 2006 / ECE R101: 2005 in their currently applicable versions) under laboratory type conditions. The measuring standards are stipulated by law. They do not apply to a specific vehicle and are provided to enable comparison between different vehicle models tested using the same uniform measuring standard. The values are accordingly not necessarily representative of real-life driving conditions. Factors such as driving style, vehicle load, road conditions, tyre size, traffic and ambient conditions may result in different fuel consumption and carbon dioxide emission levels to those achieved under the test parameters referred to above. More details are contained in the owner's manual.