

Polo Vivo



Volkswagen

Polo Vivo Hatch Specification.

X = standard O = optional - = not available

Polo Vivo Hatch Specification	55kW Trendline	63kW Comfortline	77kW Comfortline Tiptronic®	77kW Highline	77kW Maxx	81kW TSI GT
Engine						
Cylinders	4	4	4	4	4	3
Capacity (cm³)	1398	1398	1598	1598	1598	999
Bore/Stroke (mm)	76,5 / 75,6	76,5 / 75,6	76,5 / 86,9	76,5 / 86,9	76,5 / 86,9	74.5 / 76.4
Valves (per cylinder)	4	4	4	4	4	4
Compression Ratio	10.5 : 1	10.5 : 1	10.5 : 1	10.5 : 1	10.5 : 1	-
Fuel Injection	X	X	X	X	X	X
CO ₂ Emissions (g/km)	132	140	144	147	154	109
Transmission						
5-speed manual	X	X	-	X	X	-
6-speed manual	-	-	-	-	-	X
6-speed manual Tiptronic®	-	-	X	-	-	-
Performance						
Power output (kW @ r/min)	55 @ 4800	63 @ 5000	77 @ 5250	77 @ 5250	77 @ 5250	81 @ 5000
Torque (Nm @ r/min)	130 @ 3,750	132 @ 3,750	153 @ 3800	153 @ 3800	153 @ 3800	200 @ 2000
Fuel consumption (litres / 100 km)*						
Extra-urban	4,5	4,8	4,9	4,8	5,2	4
Urban cycle	7,6	7,9	8,2	8,5	8,7	5,5
Combined	5,7	5,9	6,1	6,2	6,5	4,6
Performance:						
Top speed (km/h)	171	177	188	188	188	196
Running Gear						
Front axle:						
Lowered suspension	-	-	-	-	-	X
Raised suspension (15mm)	-	-	X	-	X	-
Suspension struts, wishbone	X	X	X	X	X	X
Rear axle:						
Suspension struts, toe correcting, torsion beam, trailing arm axle	X	X	X	X	X	X
Brakes						
Brake fluid warning indicator	X	X	X	X	X	X
Brake pressure regulator	X	X	X	X	X	X
Front discs	X	X	X	X	X	X
Rear drum brakes	X	X	X	X	X	X
ABS with EBD	X	X	X	X	X	X
Wheelrims / tyres						
Full wheel trim covers	X	X	X	-	-	-
Steel spare wheel for temporary use	-	-	-	X	X	X
Full-size steel spare wheel	X	X	X	-	-	-
Wheel cover 5J X 14 steel 175/70 R 14	X	X	X	-	-	-
"Estrada" 6J X 15 alloy 185/60 R 15	O	O	O	-	-	-
"Rivazza" 7J X 16 alloy 215/45 R 16	-	-	-	X	-	-
"Canyon" 7.5J X 17 alloy 215/40 R17	-	-	-	-	X	-
"Mirabeau" 7J X 17 alloy 215/40 R17	-	-	-	-	-	X
Dimensions / Capacities						
Fuel tank 45l	X	X	X	X	X	X
Luggage compartment 280l	X	X	X	X	X	X
(seats folded 952l)	X	X	X	X	X	X

Polo Vivo Hatch Specification.

X = standard O = optional - = not available

Polo Vivo Hatch Specification	55kW Trendline	63kW Comfortline	77kW Comfortline Tiptronic®	77kW Highline	77kW Maxx	81kW TSI GT
Dimensions / Capacities						
DIN Kerb Weight (kg) (Kerb weight may vary depending on options fitted to vehicle)	1063	1066	1102	1081	1117	1092
Gross Vehicle Mass (kg)	1530	1540	1570	1540	1570	1530
Length (mm)	3972	3972	3972	3972	3972	3972
Width (mm)	1682	1682	1682	1682	1682	1682
Height (mm)	1462	1462	1462	1462	1477	1447
Track - front (mm)	1463	1463	1463	1463	1463	1463
Track - rear (mm)	1456	1456	1456	1456	1456	1456
Turning circle (m)	10,6	10,6	10,6	10,6	10,6	10,6
Wheel base (mm)	2470	2470	2470	2470	2470	2470
Ground Clearance (mm)	143	143	143	143	158	128
Towing Capacity Braked (kg)	-	1000	1000	1000	1000	1000
Towing Capacity Unbraked (kg)	-	570	580	570	570	580
Audio & Communication						
Radio 140G SD/USB/Bluetooth with B-sting/2 Speakers and 2 Tweeters	X	X	X	-	-	-
Radio 340G SD/USB/Bluetooth/App-Connect with B-sting/2 Speakers and 2 Tweeters	-	O	O	-	-	-
Radio 340G SD/USB/Bluetooth/App-Connect with B-sting/4 Speakers and 2 Tweeters	-	-	-	X	X	X
Safety						
Driver and passenger airbags	X	X	X	X	X	X
ISOFIX child seat mounting points in rear	X	X	X	X	X	X
Childproof locks on rear doors	X	X	X	X	X	X
High level brake light	X	X	X	X	X	X
Front fog lights	O	X	X	X	X	X
Rear Park Distance Control	-	X	X	X	X	X
Parking package (rear-view camera with rear PDC)	-	X	X	X	X	X
Electronic Stability Control	O	O	X	X	X	X
Tyre Pressure Monitor	O	O	X	X	X	X
Security						
Immobiliser	X	X	X	X	X	X
Alarm with Remote Central locking	X	X	X	X	X	X
Ultrasonic alarm sensors	X	X	X	X	X	X
Mirrors						
Aspherical driver's side	X	X	X	X	X	X
Black exterior mirrors	X	-	-	-	-	-
Body-coloured exterior mirrors	-	X	X	X	-	X
Dulled aluminium exterior mirrors	-	-	-	-	X	-
Manual and remotely adjustable mirrors from inside	X	X	X	X	X	X
Windows						
Tinted glass all round	X	X	X	X	X	X
Heated rear window	X	X	X	X	X	X
Front electric windows	X	X	X	X	X	X
Wiper System						
Intermittent wiper	X	X	X	X	X	X
Rear wiper	X	X	X	X	X	X
Interior Features						
Heating and fresh air ventilation system	X	X	X	X	X	X
Cup holders, 2 integrated into centre console	X	X	X	X	X	X
Digital clock	X	X	X	X	X	X
Digital trip recorder	X	X	X	X	X	X

Polo Vivo Hatch Specification.

X = standard O = optional - = not available

Polo Vivo Hatch Specification	55kW Trendline	63kW Comfortline	77kW Comfortline Tiptronic®	77kW Highline	77kW Maxx	81kW TSI GT
Interior Features (continued)						
Front passenger vanity mirror	X	X	X	X	X	X
Electronic rev counter	X	X	X	X	X	X
Front door pockets	X	X	X	X	X	X
Height-adjustable steering column	X	X	X	X	X	X
Reach-adjustable steering column	X	X	X	X	X	X
3-spoke steering wheel	X	X	X	-	-	-
Multi-function Steering Wheel	-	X	X	-	-	-
3-spoke mufu leather steering wheel with aluminium inserts	O	O	O	X	X	X
Painted upper centre console - Anthracite	X	X	X	X	-	-
Painted upper centre console - Colour	-	-	-	-	X	X
Anthracite sunvisors	-	-	-	-	-	X
Anthracite headlining/cover and A,B,C post uppers	-	-	-	-	-	X
Leatherette gearshift boot	X	X	X	X	X	X
High tone hooter	X	X	X	X	X	X
Lights on warning buzzer	X	X	X	X	X	X
Manual anti-dazzle rear-view mirror	X	X	X	X	X	X
Power steering	X	X	X	X	X	X
Manually controlled airconditioner	X	X	X	X	X	X
Multi-function Display	-	X	X	X	X	X
Cruise control	O	O	O	O	O	X
Sport pedal cluster	-	-	-	-	X	X
Loose-lay carpets mats	O	O	O	O	X	X
Smokers Package	O	O	O	O	O	O
Seats						
Height-adjustable front head restraints	X	X	X	X	X	X
Rear head restraints	X	X	X	X	X	X
Rear seat bench backrest - fixed folding	X	X	X	X	X	X
Height-adjustable driver seat	-	X	X	X	X	X
"Tradition" cloth seat trim	X	-	-	-	-	-
"City" cloth seat trim	-	X	X	-	-	-
"Cable" cloth seat trim	-	-	-	X	-	-
"Blade" cloth seat trim	-	-	-	-	X	-
"Space" cloth seat trim	-	-	-	-	-	X
Front Sports Seats	-	-	-	-	X	X
Leather trim "Vienna" seat package (package includes leather-covered seat material with other high quality materials, leather multi-function steering wheel, gearshift lever and gearknob)	-	O	O	O	O	O

Polo Vivo Hatch Specification.

X = standard O = optional - = not available

Polo Vivo Hatch Specification	55kW Trendline	63kW Comfortline	77kW Comfortline Tiptronic®	77kW Highline	77kW Maxx	81kW TSI GT
Exterior Features						
Body-coloured bumpers	X	X	X	X	X	X
Black door handles	X	-	-	-	-	-
Body-coloured door handles	-	X	X	X	X	X
Rear tailgate spoiler	-	-	-	-	-	X
Underbody guard	-	-	X	-	-	-
GT lettering on the tailgate, front grille and sides	-	-	-	-	-	X
Maxx lettering on the tailgate and sides	-	-	-	-	X	-
Black side moulding	-	-	-	-	-	X
Sporty single-pipe exhaust system with chrome trim	-	-	-	-	-	X
Silver anodised roof rails	-	-	-	-	X	-
Guarantees						
Warranty 3-year / 120 000 km	X	X	X	X	X	X
Anti-corrosion Warranty (6-year)	X	X	X	X	X	X
15 000 km service intervals	X	X	X	X	X	X
Volkswagen AutoMotion Maintenance Plan	O	O	O	O	O	O
Volkswagen AutoMotion Service Plan	O	O	O	O	O	O
Disclaimer						
<p>Dimensions, capacities and abilities apply to standard vehicles. Actual consumption will vary with vehicle loading, driving style, climatic and road conditions. The above information is effective as at 01 August 2019 and is subject to change.</p>						

Prices & Options - Polo Vivo Hatch.

Prices are inclusive of CO₂ tax and 15% VAT
X = standard O = optional - = not available

Recommended Retail Prices	55kW Trendline	63kW Comfortline	77kW Comfortline Tiptronic®	77kW Highline	77kW Maxx	81kW TSI GT
Retail Price	R192,700	R204,000	R235,800	R230,500	R239,200	R263,800
Metallic / Pearlescent Paint	No Cost	No Cost	No Cost	No Cost	No Cost	No Cost
Cruise Control	R1,900	R1,900	R1,900	R1,900	R1,900	X
Smokers Package	R250	R250	R250	R250	R250	R250
Floor Mats Front and Rear	R400	R400	R400	R400	X	X
Storage Package (Front Centre Armrest + Drawer under Drivers Seat)	-	R2,100	R2,100	R2,100	R2,100	R2,100
Safety Package (ESC + Tyre Pressure Monitor)	R2,650	R2,650	X	X	X	X
Radio 340G SD/USB/MP3/Bluetooth/App-Connect with B-sting/2 Speakers & 2 Tweeters	-	R2,950	R2,950	-	-	-
"Vienna" leather trim package (Package includes leather-covered seat material, multi-function steering wheel, gearshift lever, gearknob and front sport seats)	-	R9,500	R9,500	R9,500	R9,500	R9,500
"Estrada" 15" alloy wheels	R4,650	R4,650	R4,650	-	-	-
Front fog lights	R1,450	X	X	X	X	X
Removable Towbar	-	R3,900	R3,900	R3,900	R3,900	R3,900

Prices & Options were effective as at 01 August 2019 and subject to change without prior notice.

Volkswagen Optional & Extended AutoMotion Maintenance Plans	55kW Trendline	63kW Comfortline	77kW Comfortline Tiptronic®	77kW Maxx	81kW TSI GT
Optional Maintenance Plan (3-year / 45 000 km)	R7,245				
Optional Maintenance Plan (5-year / 60 000 km)	R9,660				
Optional Maintenance Plan (5-year / 80 000 km)	R17,020				
Maintenance Plan Extension (6-year) Pre-requisite is an Optional 5-year combo Maintenance Plan	R9,854				
Optional Maintenance Plan (6-year / 60 000 km)	R15, 572				

Subject to an Active Standard Volkswagen warranty or an Active Genuine Volkswagen Maintenance Plan

Volkswagen Optional & Extended AutoMotion Service Plans	55kW Trendline	63kW Comfortline	77kW Comfortline Tiptronic®	77kW Maxx	81kW TSI GT
Optional Service Plan (3-year / 45 000 km)	R4,821				
Optional Service Plan (5-year / 60 000 km)	R8,282				
Optional Service Plan (5-year / 75 000 km)	R9,294				
Service Plan Extension (6-year) Pre-requisite is an Optional 5-year combo Service Plan	R1,012				

Share the ride.

The Polo Vivo is here and it's equipped with a variety of features to suit you and your crew. From the front electric windows, ISOFIX mounting points for baby seats, Ultrasonic alarm, to its stylish exterior and sound system, the Polo Vivo has it all. With features as attractive as this, everyone will want to share the ride.



Style comes standard.

The Polo Vivo looks as smooth as it drives. With its smart design and handy features, it's no wonder it grabs attention.

Features you can expect across the Polo Vivo range:

- Front electric windows
- ISOFIX mounting points for baby seats
- Ultrasonic alarm system

For more information on standard features and optional extras on selected models, visit www.vw.co.za



It's what's on the inside that counts.

As the adage goes, it's what's on the inside that counts – the same is true for Polo Vivo. It raises the bar for vehicles in its category.

Standard features you can expect in the Polo Vivo include:

- Electronic rev counter
- Digital clock
- Digital trip recorder
- Passenger vanity mirror
- Front door pockets
- Height- and reach-adjustable steering column
- Manual anti-dazzle rear-view mirror
- Power steering
- Airconditioning

For more information on optional extras on selected models, visit www.vw.co.za



Note that this is a Highline with optional features.

Innovation has never looked this good.

The Polo Vivo is equipped with more digital features than any other small car in its category. The 340G radio with SD, USB, Bluetooth, App-Connect with B-sting/2 speakers and 2 tweeters are optional on the Comfortline. All these features, as well as 4 speakers and 2 tweeters, come standard on the Highline, GT and Maxx.

App-Connect allows you to access certain smartphone functions such as selected apps, maps and music through the Android Auto and CarPlay applications.

For more information on standard features and optional extras on selected models, visit www.vw.co.za



Note that this is a Highline with optional features.

Feel safe and sound in the Polo Vivo.

When you get behind the wheel of a Polo Vivo, you can trust that you and your passengers are well protected. From airbags to ISOFIX mounting points for baby seats, young and old will be safeguarded. Knowing that your car comes with these features, is just one more reason to own a Polo Vivo.

Features you can expect in the Polo Vivo:

- Driver & passenger airbags
- ISOFIX baby seat mounting points
- Childproof locks on rear doors
- High-level brake light
- Front fog lights (Optional on Trendline)
- Electronic Stability Control (Optional on the Trendline and manual Comfortline)
- Tyre Pressure Monitor (Optional on the Trendline and manual Comfortline)



More power to you.

If you're looking for punch and potency in a car, we have something for you. The Trendline comes with a power output of 55kW and the Comfortline (manual) with 63kW, Comfortline Tiptronic[®], Highline and Maxx all come with 77kW and GT comes with 81kW. While all five trim lines share a bunch of attractive features, they also come with their own optional and standard key features. At the end of the day, how you like your Polo Vivo is entirely up to you.



Raising the bar on tar.

When you get behind the wheel of the Polo Vivo GT, you'll agree that it's in a class of its own and as stylish as it is sporty. It comes with attractive exterior features such as 17" 'Mirabeau' wheels and a single pipe exhaust with chrome trim. Interior attributes include a 1.0 TSI 81kW engine, front Sport seats, aluminium-look pedals and 'Anthracite' headlining.

More features you can expect in the GT:

- Cruise Control
- Lowered suspension (-15mm)
- GT logo on sides of vehicle and grille
- 'Anthracite' sunvisors
- 'Space' seat trim
- Tailgate spoiler in black



It's better in leather.

The Polo Vivo just got smoother than smooth with the option of a leather-trimmed interior. When you're looking to impress, you'll do just that when you rock up in your extra-sleek new ride.



Colour options



Flash Red



Reef Blue Metallic



Deep Black Pearl



Pure White



Reflex Silver Metallic



Limestone Grey Metallic

Maxx colour options



Deep Black Pearl



Pure White



Flash Red



Energetic Orange



Reflex Silver Metallic

Wheel options



14" steel wheels
(Standard on Trendline/Comfortline)



15" 'Estrada' alloys
(Optional on Trendline/Comfortline)



16" 'Rivazza' alloys
(Standard on Highline)

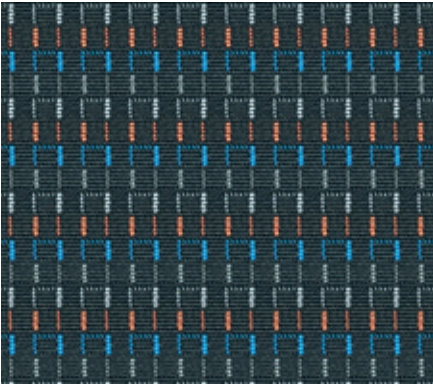


17" 'Mirabeau' alloys
(Standard on GT)



17" 'Canyon' alloys
(Standard on Maxx)

Seat trim options



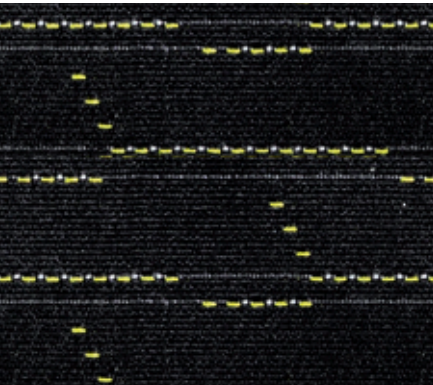
'Tradition' cloth seat trim
(Standard on Trendline)



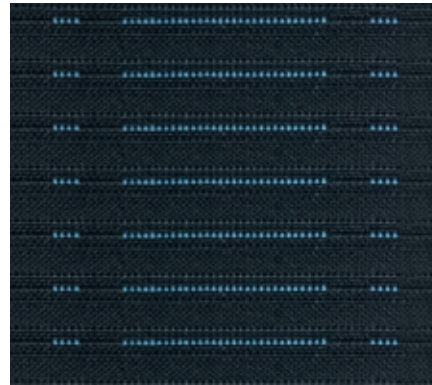
'City' cloth seat trim
(Standard on Comfortline)



'Cable' cloth seat trim
(Standard on Highline)



'Maxx' seat trim
(Standard on Maxx)



'Space' cloth seat trim
(Standard on GT)



'Vienna' leather* seat trim
(Optional across the range)

*A combination of leather and high-quality durable materials.



This information was effective as at 01 August 2019 and is subject to change without notice.

Visit us at www.vw.co.za
©Volkswagen South Africa