

Polo Sedan



Volkswagen



Polo Sedan Specifications.

X = standard O = optional - = not available

Polo Sedan Specification	63kW Trendline	77kW Trendline	63kW Comfortline
Engine			
Cylinders	4	4	4
Capacity (cm ³)	1,4/1398	1,6/1598	1,4/1398
Valves (per cylinder)	4	4	4
Compression Ratio	10.5	10.5	10.5
Power output (kW @ r/min)	63 @ 5000	77 @ 5250	63 @ 5000
Torque (Nm @ r/min)	132@3600	155@3500	132@3600
Fuel Injection	x	x	x
Common Rail	-	-	-
Turbocharged	-	-	-
CO ₂ Emissions (g/km)	139	143	139
Transmission			
5-speed manual	X	X	X
6-speed automatic	-	-	-
Performance			
Acceleration in seconds (0 - 100 km/h)	12,8	11,1	12,8
Top speed (km/h)	178	190	178
Fuel consumption (litres / 100 km)*			
Extra-urban	4,8	4,9	4,8
Urban cycle	7,7	8,0	7,7
Combined	5,9	6,0	5,9
Running Gear			
Front axle:			
Suspension struts, wishbone	X	X	X
Rear axle:			
Suspension struts, toe correcting, torsion beam, trailing arm axle	X	X	X
Brakes			
ABS (Anti-lock Brake System) with EBD	X	X	X
Electronic Stability Program (ESP)	-	-	-
Brake fluid warning indicator	X	X	X
Front disc brakes	X	X	X
Rear drum brakes	X	X	X
Wheelrims / Tyres			
Steel 5Jx14" wheels (175/70 R14 tyres)	X	X	-
Alloy 6Jx15" "Tosa" wheels (185/60 R15 tyres)	-	-	X
Alloy 7Jx16" "Portago" wheels (205/45 R16 tyres)	-	-	O
Lockable wheelbolts	-	-	X
Full-size steel spare wheel	X	X	-
Steel spare wheel for temporary use	-	-	X
Toolkit & jack	X	X	X
Dimensions / Capacities			
Fuel tank (in litres)	55	55	55
Luggage compartment volume (in litres)	454	454	454
DIN Kerb Weight (kg)	1106	1111	1106
Gross Vehicle Mass (kg)	1670	1680	1670
Length (mm)	4390	4390	4390
Width (mm)	1699	1699	1699

Polo Sedan Specifications.

X = standard O = optional - = not available

Polo Sedan Specification	63kW Trendline	77kW Trendline	63kW Comfortline
Dimensions / Capacities (continued)			
Height (mm)	1467	1467	1467
Track - front (mm)	1457	1457	1457
Track - rear (mm)	1500	1500	1500
Turning circle (m)	10,8	10,8	10,8
Wheel base (mm)	2553	2553	2553
Ground Clearance (mm)	163	163	163
Safety			
Driver and passenger front airbags	X	X	X
Height-adjustable seat belts for driver and front passenger	X	X	X
3-point seat belts for rear outer seats	X	X	X
3-point seat belt for centre rear seat	X	X	X
ISOFIX child seat mounting points (rear)	X	X	X
Childproof locks on rear doors	X	X	X
High level brake light	X	X	X
Warning triangle in boot	X	X	X
Rain-sensing wipers with auto-dimming interior mirror	-	-	O
Park Distance Control (rear)	O	O	O
Rear-view Camera	-	-	O
LED headlamps with separate LED daytime running lights (includes Rear-view Camera)	-	-	O
Audio & Communication			
RCD-230G Radio/CD with MP3, USB Interface, SD Card, Bluetooth	X	X	-
RCD-340G Radio with MP3, USB, SD Card, Bluetooth, App-Connect	-	-	X
4 speakers	X	X	X
Multi-function computer	-	-	X
Security			
Alarm with back-up horn, towing protection and ultrasonic interior monitoring	X	X	X
Immobiliser	X	X	X
Remote central locking	X	X	X
Seats			
Cloth trim seats	X	X	X
Height-adjustable driver's seat	X	X	X
Height-adjustable passenger's seat	-	-	X
Height-adjustable front head restraints	X	X	X
Three rear head restraints	X	X	X
Foldable rear seats (split 60/40)	X	X	X
Storage pockets on the rear of front seats	X	X	X
Windows			
Side & rear windows heat insulating glass	X	X	X
Electric windows, front and rear	X	X	X
Heated rear window	X	X	X
Mirrors			
Manually adjustable from interior	X	X	-
Electrically adjustable from interior	-	-	X
Colour-coded exterior mirrors	X	X	X
Manual anti-dazzle rear-view mirror	X	X	X
Vanity mirrors with covers, driver and passenger	X	X	X

Polo Sedan Specifications.

X = standard O = optional - = not available

Polo Sedan Specification	63kW Trendline	77kW Trendline	63kW Comfortline
Wiper System			
Wiper system with intermittent control	X	X	X
Interior features			
Manual airconditioner	X	X	X
Dust & pollen filter	X	X	X
Instrument cluster with tachometer, clock and km/h speedometer	X	X	X
12V power socket in centre console	X	X	X
Headlight range adjustment, electrical	X	X	X
Dimmable dashboard illumination	-	-	X
Cup holders, 2 integrated into centre console, front	X	X	X
Front door pockets	X	X	X
Front and rear floor mats	O	O	O
Height-adjustable steering column	X	X	X
Reach-adjustable steering column	X	X	X
Standard 3-spoke plastic steering wheel	X	X	-
Leather multi-function 3-spoke steering wheel	-	-	X
Leather gearshift knob & handbrake cover	-	-	X
Single tone hooter	X	X	X
Lights on warning buzzer	X	X	X
Interior courtesy light with delay	X	X	X
Reading lights front and rear	X	X	X
Luggage compartment lighting	X	X	X
Power steering	X	X	X
Glove compartment	X	X	X
Interior chrome package: Handbrake knob, gear boot frames, airvent frames, rotary switch sides and switch bezel edges	-	-	X
Cruise Control	O	O	X
Smoker's package: cigarette lighter and ashtrays	O	O	O
Exterior			
"Bee-sting" roof antenna	X	X	X
Twin halogen headlamps with integrated high beam	X	X	X
Front foglights	-	-	X
Rear foglight	X	X	X
Side indicators located in front fender	X	X	X
Windshield, side and rear windows in heat-insulating glass	X	X	X
Colour-coded door handles	X	X	X
Colour-coded bumpers	X	X	X
Guarantees			
Warranty (3-year / 120 000 km)	X	X	X
Anti-corrosion Warranty (12-year)	X	X	X
Volkswagen Service Plan (3-year / 45 000 km)	O	O	O
Service intervals (15 000 km)	X	X	X
Disclaimer			
<p>Dimensions, capacities and abilities apply to standard vehicles. Actual consumption will vary with vehicle loading, driving style, climatic and road conditions. The above information is effective as at 01 August 2019 and is subject to change.</p>			

Polo Sedan Specifications.

X = standard O = optional - = not available

Polo Sedan Specification	77kW Comfortline	77kW Comfortline Tiptronic®	81kW TDI Comfortline
Engine			
Cylinders	4	4	4
Capacity (cm³)	1.6/1598	1.6/1598	1.5/1498
Valves (per cylinder)	4	4	4
Compression Ratio	10,5	10,5	16,5
Power output (kW @ r/min)	77 @ 5250	77 @ 5250	81 @ 4400
Torque (Nm @ r/min)	155 @ 3500	155 @ 3500	250 @ 1500 - 2500
Fuel Injection	X	X	-
Common Rail	-	-	X
Turbocharged	-	-	X
CO ₂ Emissions (g/km)	143	154	128
Transmission			
5-speed manual	X	-	X
6-speed automatic	-	X	-
Performance			
Acceleration in seconds (0 - 100 km/h)	11.1	12.3	11.2
Top speed (km/h)	190	187	186
Fuel consumption (litres / 100 km)*			
Extra-urban	4,9	5,3	4
Urban cycle	8,0	8,6	6,4
Combined	6,0	6,5	4,9
Running Gear			
Front axle:			
Suspension struts, wishbone	X	X	X
Rear axle:			
Suspension struts, toe correcting, torsion beam, trailing arm axle	X	X	X
Brakes			
ABS (Anti-lock Brake System) with EBD	X	X	X
Electronic Stability Program (ESP)	X	X	X
Brake fluid warning indicator	X	X	X
Front disc brakes	X	X	X
Rear drum brakes	X	X	X
Wheelrims / Tyres			
Steel 5Jx14" wheels (175/70 R14 tyres)	-	-	-
Alloy 6Jx15" "Tosa" wheels (185/60 R15 tyres)	X	X	X
Alloy 7Jx16" "Portago" wheels (205/45 R16 tyres)	O	O	O
Lockable wheelbolts	X	X	X
Steel spare wheel for temporary use	X	X	X
Toolkit & jack	X	X	X
Dimensions / Capacities			
Fuel tank (in litres)	55	55	55
Luggage compartment volume (in litres)	454	454	454
DIN Kerb Weight (kg)	1111	1182	1211
Gross Vehicle Mass (kg)	1680	1730	1750
Length (mm)	4390	4390	4390
Width (mm)	1699	1699	1699
Height (mm)	1467	1467	1467

Polo Sedan Specifications.

X = standard O = optional - = not available

Polo Sedan Specification	77kW Comfortline	77kW Comfortline Tiptronic®	81kW TDI Comfortline
Dimensions / Capacities (continued)			
Track - front (mm)	1457	1457	1457
Track - rear (mm)	1500	1500	1500
Turning circle (m)	10,8	10,8	10,8
Wheel base (mm)	2553	2553	2553
Ground Clearance (mm)	163	163	163
Safety			
Driver and passenger front airbags	X	X	X
Height-adjustable seat belts for driver and front passenger	X	X	X
3-point seat belts for rear outer seats	X	X	X
3-point seat belt for centre rear seat	X	X	X
ISOFIX child seat mounting points (rear)	X	X	X
Childproof locks on rear doors	X	X	X
High level brake light	X	X	X
Warning triangle in boot	X	X	X
Rain-sensing wipers with auto-dimming interior mirror	O	O	O
Park Distance Control	O	O	O
Rear-view Camera	O	O	O
LED headlamps with separate LED daytime running lights (includes Rear-view Camera)	O	O	O
Audio & Communication			
RCD-230G Radio/CD with MP3, USB Interface, SD Card, Bluetooth	-	-	-
RCD-340G Radio with MP3, USB, SD Card, Bluetooth, App-Connect	X	X	X
4 speakers	X	X	X
Multi-function computer	X	X	X
Security			
Alarm with back-up horn, towing protection and ultrasonic interior monitoring	X	X	X
Immobiliser	X	X	X
Remote central locking	X	X	X
Seats			
Cloth trim seats	X	X	X
Height-adjustable driver's seat	X	X	X
Height-adjustable passenger's seat	X	X	X
Height-adjustable front head restraints	X	X	X
Three rear head restraints	X	X	X
Foldable rear seats (split 60/40)	X	X	X
Storage pockets on the rear of front seats	X	X	X
Windows			
Side & rear windows heat insulating glass	X	X	X
Electric windows, front and rear	X	X	X
Heated rear window	X	X	X
Mirrors			
Manually adjustable from interior	-	-	-
Electrically adjustable from interior	X	X	X
Colour-coded exterior mirrors	X	X	X
Manual anti-dazzle rear-view mirror	X	X	X
Vanity mirrors with covers, driver and passenger	X	X	X

Polo Sedan Specifications.

X = standard O = optional - = not available

Polo Sedan Specification	77kW Comfortline	77kW Comfortline Tiptronic®	81kW TDI Comfortline
Wiper System			
Wiper system with intermittent control	X	X	X
Interior Features			
Manual airconditioner	X	X	X
Dust & pollen filter	X	X	X
Instrument cluster with tachometer, clock and km/h speedometer	X	X	X
12V power socket in centre console	X	X	X
Headlight range adjustment, electrical	X	X	X
Dimmable dashboard illumination	X	X	X
Cup holders, 2 integrated into centre console, front	X	X	X
Front door pockets	X	X	X
Front and rear floor mats	O	O	O
Height-adjustable steering column	X	X	X
Reach-adjustable steering column	X	X	X
Standard 3-spoke plastic steering wheel	-	-	-
Leather multi-function 3-spoke steering wheel	X	X	X
Leather gearshift knob & handbrake cover	X	X	X
Single tone hooter	X	X	X
Lights on warning buzzer	X	X	X
Interior courtesy light with delay	X	X	X
Reading lights front and rear	X	X	X
Luggage compartment lighting	X	X	X
Power steering	X	X	X
Glove compartment	X	X	X
Interior chrome package: Handbrake knob, gear boot frames, airvent frames, rotary switch sides and switch bezel edges	X	X	X
Cruise Control	X	X	X
Smoker's package: cigarette lighter and ashtrays	O	O	O
Exterior			
"Bee-sting" roof antenna	X	X	X
Twin halogen headlamps with integrated high beam	X	X	X
Front foglights	X	X	X
Rear foglight	X	X	X
Side indicators located in front fender	X	X	X
Windshield, side and rear windows in heat-insulating glass	X	X	X
Colour-coded door handles	X	X	X
Colour-coded bumpers	X	X	X
Guarantees			
Warranty (3-year / 120 000 km)	X	X	X
Anti-corrosion Warranty (12-year)	X	X	X
Volkswagen Service Plan (3-year / 45 000 km)	O	O	O
Service intervals (15 000 km)	X	X	X
Disclaimer			
<p>Dimensions, capacities and abilities apply to standard vehicles. Actual consumption will vary with vehicle loading, driving style, climatic and road conditions. The above information is effective as at 01 August 2019 and is subject to change.</p>			

Prices & Options - Polo Sedan.

Prices are inclusive of CO₂ tax and 15% VAT
X = standard O = optional - = not available

Recommended Retail Prices	Polo Sedan 63kW Trendline Manual	Polo Sedan 77kW Trendline	Polo Sedan 63kW Comfortline (Manual)	Polo Sedan 77kW Comfortline (Manual)	Polo Sedan 77kW Comfortline Tiptronic®	Polo Sedan 81kW TDI Comfortline
Retail Price	R216,300	R236,400	R236,100	R256,300	R272,300	R284,000
Metallic / Pearlescent Paint	No Cost	No Cost	No Cost	No Cost	No Cost	No Cost
16" Mistral Alloy wheels	—	—	R4,100	R4,100	R4,100	R4,100
16" Portago Alloy wheels	—	—	R4,100	R4,100	R4,100	R4,100
Rain sensor with auto-dimming interior mirror	—	—	R1,950	R1,950	R1,950	R1,950
Rear-view Camera	—	—	R3,300	R3,300	R3,300	R3,300
Rear Park Distance Control	R3,950	R3,950	R3,950	R3,950	R3,950	R3,950
Cruise Control	R1,900	R1,900	X	X	X	X
Smoker's Package	R250	R250	R250	R250	R250	R250
LED Headlamps with separate LED daytime running lights with Rear-view Camera	—	—	R13,950	R13,950	R13,950	R13,950

Volkswagen Optional & Extended AutoMotion Maintenance Plans	Polo Sedan 63kW Trendline Manual	Polo Sedan 77kW Trendline (Manual)	Polo Sedan 63kW Comfortline (Manual)	Polo Sedan 77kW Comfortline (Manual)	Polo Sedan 77kW Comfortline Tiptronic®	Polo Sedan 81kW TDI Comfortline
Optional Maintenance Plan (3-year / 45 000 km)	R7,245					
Optional Maintenance Plan (5-year / 60 000 km)	R9,660					
Optional Maintenance Plan (5-year / 80 000 km)	R17,020					
Maintenance Plan Extension (1-year)	R9,853					
Optional Maintenance Plan (6-year / 60 000 km)	R15,572					

Volkswagen Optional & Extended AutoMotion Service Plans	Polo Sedan 63kW Trendline Manual	Polo Sedan 77kW Trendline (Manual)	Polo Sedan 63kW Comfortline (Manual)	Polo Sedan 77kW Comfortline (Manual)	Polo Sedan 77kW Comfortline Tiptronic®	Polo Sedan 81kW TDI Comfortline
Optional Service Plan (3-year / 45 000 km)	R4,631	R4,631	R4,631	R4,631	R4,631	R5,065
Optional Service Plan (5-year / 60 000 km)	R8,252	R8,252	R8,252	R8,252	R9,760	R8,685
Optional Service Plan (5-year / 75 000 km)	R9,273	R9,273	R9,273	R9,273	R10,781	R9,764
Service Plan Extension (6-year) Pre-requisite is an Optional 5-year combo Service Plan	R1,021	R1,021	R1,021	R1,021	R1,021	R1,080

* The Minimum Options are displayed for each upgrade and/or extension. For a comprehensive quotation on further extension offerings please contact your nearest dealer.
Prices / Specifications Subject to Changed without Prior Notice.

A new lease on style.

The Polo Sedan has been masterfully sculpted to complement motivated, driven and successful drivers. The new-look exterior is the perfect cover and hints at onlookers that the interior has more to offer. Stylish and contemporary, the Polo Sedan takes compact design to the next level. Spacious, packed with performance and brimming with safety features, this car is ready to take you further – and then some.

Drivers in front of you will make way. A bold new chrome front bumper with a chrome-finished grille make a bold statement in the rear-view mirrors. Those behind you will also be in awe with the sleek rear reflectors stylishly imbedded in the metallic surface. This car radiates accomplishment and owns every bit of the road it covers.



The 15" Tosa alloy wheels with 185/60 R15 tyres (shown above) are standard on the Comfortline and feature an eye-catching 10-spoke design, adding a dynamic, sophisticated touch.



The Polo Sedan's 454 litres of generous boot space is elegantly housed in a stylish, sleek rear design.



Intelligent interior.

The upmarket 'Cloud' cloth trim comes standard and the two whiplash-optimised front head restraints not only ensure additional comfort, but also provide effective support for the head and spine in the event of a collision.

The standard Climatic® airconditioner ensures a pleasant temperature throughout your Polo Sedan, whatever the weather outside. The RCD-R340G radio, standard on the Comfortline, features Bluetooth and USB functionality, App-Connect and a colour touchscreen, as well as four premium speakers that deliver superior sound quality.

Interior Features

- Manual airconditioner
- Dust and pollen filter
- 12V power socket in centre console
- Headlight range adjustment, electrical
- Cup holders, 2 integrated into centre console, front
- Front door pockets
- Height-adjustable steering column
- Reach-adjustable steering column
- Single tone hooter
- Lights on warning buzzer
- Interior courtesy light with delay
- Reading lights, 2 front, 1 rear
- Luggage compartment lighting
- Power steering
- Chrome door handles (Comfortline only)
- Glove compartment with pen, notes, coins and sunglasses holders

Image does not depict the new RCD-R340G radio (standard on Comfortline)



Ready to make every drive unforgettable.

Safety and Technology

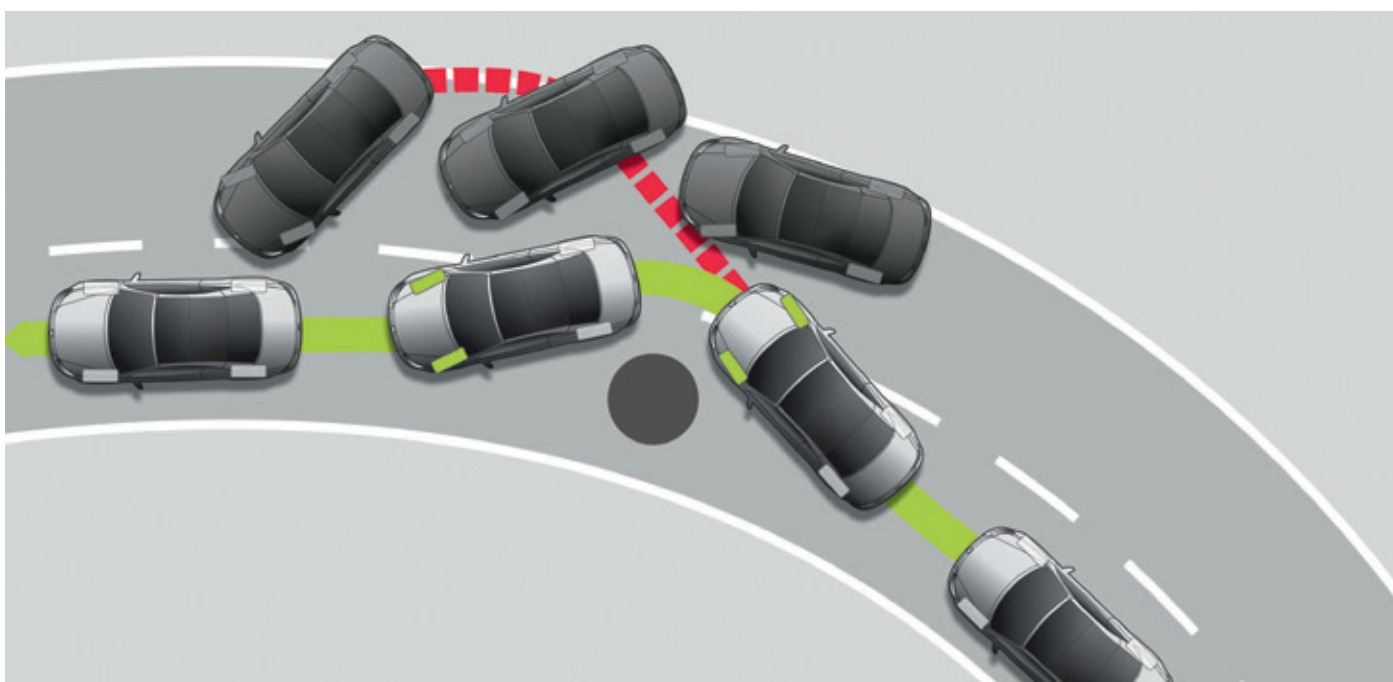
- Dual front airbags with passenger airbag deactivation
- Height-adjustable seat belts for driver and front passenger
- 3-point seat belt for rear outer seat
- ISOFIX child seat mounting points
- Childproof locks on rear doors
- High level brake light
- Warning triangle in boot
- ABS with EBD
- Alarm with back-up horn, towing protection and ultrasonic interior monitoring
- Seat belt reminder warning

Brakes

- Brake fluid warning indicator
- Electronic Stability Programme (ESP)
- Front disc brakes
- Rear drum brakes

Security

- Immobiliser
- Remote central locking



Electronic Stability Programme (ESP) helps to correct oversteer, understeer and loss of control of the vehicle. ESP intelligently controls the engine management system to restore traction to individual wheels when it detects a loss of grip (standard on the 1.5 TDI and on 1.6 Comfortline models).



The new rear bumper design comes with rear reflectors and new tail lights in 3D design with new graphics.

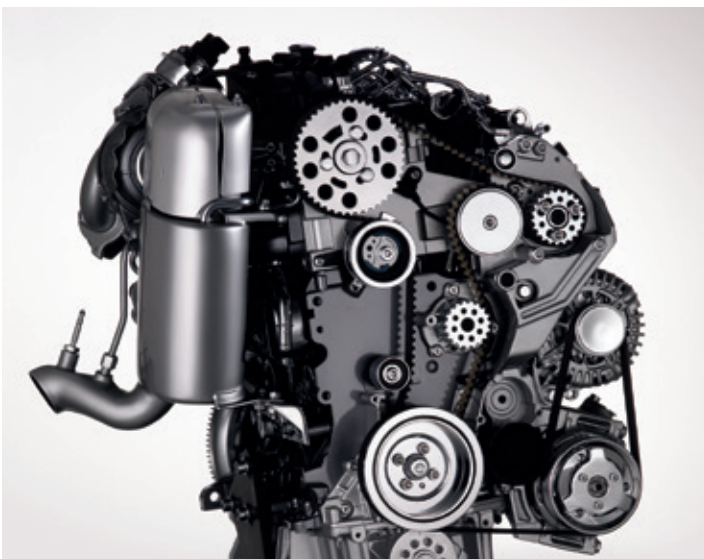


Front fog lights not only add a striking look to the front of the vehicle, but provide safety in bad weather or when there is poor visibility (available on Comfortline only).

Driving pleasure, every day.



The Polo Sedan comes with an economical TDI engine option. It's the only Sedan in the segment that comes with one. The 5-speed manual gearbox transmits power with short, accurate shifts and easy handling. The 1.6 Comfortline boasts an optional 6-speed automatic gearbox for an even smoother ride.



The new-generation 16-valve petrol engines are available in 1.4 and 1.6 derivatives. These multi-valve petrol engines offer improved torque delivery, reducing fuel consumption and CO₂ emissions.



At speeds of over 30 km/h, cruise control (standard on the Comfortline) keeps your selected speed constant, enabling you to relax on longer journeys, without having to keep an eye on your speedometer.

Ready to colour your world.



Flash Red
Non-metallic
D8D8



Titanium Beige
Metallic
ON0N



Reflex Silver
Metallic
8E8E



Candy White
Non-metallic
B4B4



Carbon Steel Grey
Metallic
1k1k



Toffee Brown
Metallic
4Q4Q



Deep Black
Pearl Effect
2T2T

Exterior Features

- "Bee-sting" roof antenna
- Chrome trim on louvres (x3) on front upper grille
- Rear fog light
- Side indicators located in front mirrors
- Side and rear windows in heat-insulating glass
- Colour-coded bumpers

Optional

- Rear Park Distance Control
- Smoker's package: cigarette lighter and ashtrays
- Rear-view Camera (Comfortline only)
- 16" Mistral alloy wheels (Comfortline only)
- Rain sensor with auto-dimming interior mirror (Comfortline only)
- LED headlamps with separate LED daytime running lights (Comfortline only)

*Fuel consumption and CO₂ emissions values were obtained in accordance with the prescribed uniform measuring standard (SANS 20101: 2006 / ECE R101: 2005 in its currently applicable version). The verified values do not apply to a specific vehicle and do not constitute part of the product offer. They are provided solely for the purposes of comparison between different vehicle models. Because of the need to maintain strict comparability of results achieved by the standard tests, they cannot be fully representative of real-life driving conditions. Variations in driving styles and in road, vehicle and ambient conditions, will have a bearing on the results achieved on the road. For these reasons consumption achieved on the road will not necessarily accord with these verified values.

Based on lightest variable (no options) and 90% tank filling. Weight may vary depending on options fitted to vehicle.

Dimensions, capacities and abilities apply to standard vehicles.

The information was effective as at 15 May 2019, and is subject to change.

This information was effective as at 01 August 2019 and is subject to change without notice.
Visit us at vw.co.za
©Volkswagen South Africa

